

À des fins de recherche uniquement

Anticorps Monoclonal anti-TDRKH

Numéro de catalogue: CL488-66845



Informations de base

Numéro de catalogue: CL488-66845	Numéro d'acquisition GenBank: BC032690	Méthode de purification: Purification par protéine G
Taille: 100ul, Concentration: 1000 µg/ml by Nanodrop;	Identification du gène (NCBI): 11022	CloneNo.: 2B1B12
Hôte: Mouse	Nom complet: tudor and KH domain containing	Dilutions recommandées: IF 1:400-1:1600
Isotype: IgG1	MW calculé: 606 aa, 67 kDa	Excitation/Emission maxima wavelengths: 493 nm / 522 nm
Immunogen Catalog Number: AG4720	MW observés: 67-70 kDa	

Applications

Applications testées: FC (Intra), IF	Contrôles positifs: IF : cellules HepG2,
Spécificité de l'espèce: Humain, porc, rat, souris	

Informations générales

Tudor and KH domain-containing protein(TDRKH)Tudor domains are protein modules that mediate protein-protein interactions, potentially by binding to methylated ligands. Both KH and tudor domains are involved in binding RNA or single-strand DNA. Tudor also is a germ cell-specific protein with multiple Tudor domains and is involved in germ plasm formation and germ cell specification. TDRKH is one Tudor protein with a single Tudor domain.

Stockage

Stockage:
Stocker à -20 °C. Éviter toute exposition à la lumière.
Tampon de stockage:
PBS avec glycérol à 50 %, Proclin300 à 0,05 % et BSA à 0,5 %, pH 7,3.
L'aliquotage n'est pas nécessaire pour le stockage à -20C

***** Les 20ul contiennent 0,1% de BSA.**

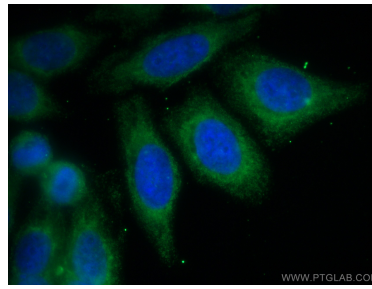
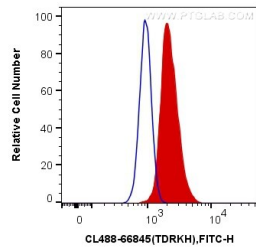
For technical support and original validation data for this product please contact:

T: 1 (888) 4PTGLAB (1-888-478-4522) (toll free
in USA), or 1(312) 455-8498 (outside USA)

E: proteintech@ptglab.com
W: ptglab.com

This product is exclusively available under Proteintech Group brand and is not available to purchase from any other manufacturer.

Données de validation sélectionnées



1×10^6 MCF-7 cells were intracellularly stained with 0.4 μ g CoraLite® Plus 488 Anti-Human TDRKH (CL488-66845, Clone:2B1B12) (red), or 0.4 μ g Mouse IgG1 Isotype Control (CL488-66360, Clone: T1F8D3F10) (blue). Cells were fixed with 4% PFA and permeabilized with Flow Cytometry Perm Buffer (PF00011-C).

Immunofluorescent analysis of (-20°C Methanol) fixed HepG2 cells using CoraLite® Plus 488 TDRKH antibody (CL488-66845, Clone: 2B1B12) at dilution of 1:800.