

À des fins de recherche uniquement

# Anticorps Monoclonal anti-RACK1; GNB2L1



Numéro de catalogue: **CL488-66940**

## Informations de base

Numéro de catalogue: CL488-66940	Numéro d'acquisition GenBank: BC019093	Méthode de purification: Purification par protéine A
Taille: 100ul , Concentration: 1000 µg/ml by Nanodrop;	Identification du gène (NCBI): 10399	CloneNo.: 1E11A7
Hôte: Mouse	Nom complet: guanine nucleotide binding protein (GIF 1:50-1:500 protein), beta polypeptide 2-like 1	Dilutions recommandées:
Isotype: IgG2a	MW calculé 36 kDa	Excitation/Emission maxima wavelengths: 493 nm / 522 nm
Immunogen Catalog Number: AG26708		

## Applications

Applications testées: IF	Contrôles positifs: IF : cellules HeLa,
Spécificité de l'espèce: Humain	

## Informations générales

Members of the protein kinase C (PKC) family play a key regulatory role in a variety of cellular functions, including cell growth and differentiation, gene expression, hormone secretion and membrane function. RACK1 (receptor for activated protein kinase C 1), encoded by GNB2L1 gene, is a 317 amino acid guanine nucleotide-binding protein subunit beta-2-like 1 protein which is involved in the recruitment, assembly and/or regulation of a variety of signaling molecules, it contains 7 WD-repeats and is implicated in various protein interaction activities. RACK1 is a component of the 40S ribosomal subunit involved in translational repression. Recent finding suggests that RACK1 may be a new promising diagnosis biomarker and therapeutic target for non-small-cell lung cancer (NSCLC).

## Stockage

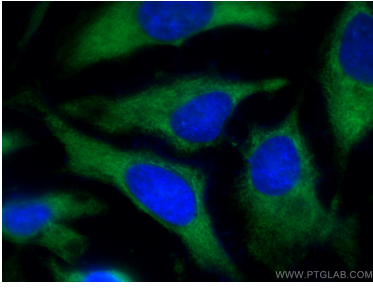
**Stockage:**  
Stocker à -20 °C. Éviter toute exposition à la lumière.  
**Tampon de stockage:**  
PBS avec glycérol à 50 %, Proclin300 à 0,05 % et BSA à 0,5 %, pH 7,3.  
L'aliquotage n'est pas nécessaire pour le stockage à -20C

**\*\*\* Les 20ul contiennent 0,1% de BSA.**

For technical support and original validation data for this product please contact:  
T: 1 (888) 4PTGLAB (1-888-478-4522) (toll free in USA), or 1(312) 455-8498 (outside USA)  
E: [proteintech@ptglab.com](mailto:proteintech@ptglab.com)  
W: [ptglab.com](http://ptglab.com)

This product is exclusively available under Proteintech Group brand and is not available to purchase from any other manufacturer.

## Données de validation sélectionnées



Immunofluorescent analysis of (-20°C Methanol) fixed HeLa cells using Coralite® Plus 488 RACK1; GNB2L1 antibody (CL488-66940, Clone: 1E11A7) at dilution of 1:200.