

À des fins de recherche uniquement

Anticorps Monoclonal anti-CTBP1

Numéro de catalogue: CL488-66995



Informations de base

Numéro de catalogue: CL488-66995	Numéro d'acquisition GenBank: BC011655	Méthode de purification: Purification par protéine G
Taille: 100ul , Concentration: 2000 µg/ml by Bradford method using BSA as the standard;	Identification du gène (NCBI): 1487	CloneNo.: 1C4B2
Hôte: Mouse	Nom complet: C-terminal binding protein 1	Dilutions recommandées: IF 1:50-1:500
Isotype: IgG1	MW calculé 48 kDa	Excitation/Emission maxima wavelengths: 493 nm / 522 nm
Immunogen Catalog Number: AG28567		

Applications

Applications testées: FC (Intra), IF	Contrôles positifs: IF : cellules HepG2,
Spécificité de l'espèce: Humain, rat, souris	

Informations générales

CTBP1, also named as C-terminal-binding protein 1, is a 440 amino acid protein, which belongs to the D-isomer specific 2-hydroxyacid dehydrogenase family. CTBP1 is a cellular phosphoprotein that associates with various proteins and functions as a corepressor of transcription. CTBP1 and the related protein CTBP2 are characterized as C-terminal binding protein of adenovirus E1A, and they preferentially associate with the E1A via a 5-amino acid motif, PLDLS, to repress E1A induced oncogenesis and cellular transformation. CTBP1 is expressed from embryo to adult, but CTBP2 is mainly expressed during embryogenesis.

Stockage

Stockage:
Stocker à -20 °C. Éviter toute exposition à la lumière. Stable pendant un an après l'expédition.
Tampon de stockage:
PBS avec glycérol à 50 %, Proclin300 à 0,05 % et BSA à 0,5 %, pH 7,3.
L'aliquotage n'est pas nécessaire pour le stockage à -20C

*** Les 20ul contiennent 0,1% de BSA.

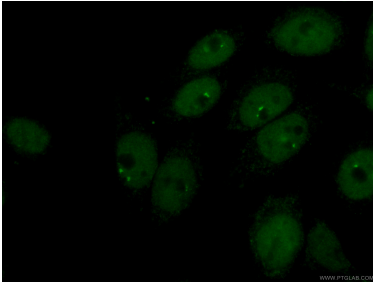
For technical support and original validation data for this product please contact:

T: 1 (888) 4PTGLAB (1-888-478-4522) (toll free
in USA), or 1(312) 455-8498 (outside USA)

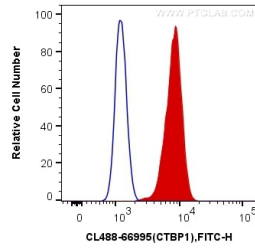
E: proteintech@ptglab.com
W: ptglab.com

This product is exclusively available under Proteintech Group brand and is not available to purchase from any other manufacturer.

Données de validation sélectionnées



Immunofluorescent analysis of (4% PFA) fixed HepG2 cells using CL488-66995 (CTBP1 antibody) at dilution of 1:100.



1X10⁶ HepG2 cells were intracellularly stained with 0.2 ug Coralite® Plus 488 Anti-Human CTBP1 (CL488-66995, Clone:1C4B2) (red), or 0.2 ug Mouse IgG1 Isotype Control (CL488-66360, Clone: T1F8D3F10) (blue). Cells were fixed and permeabilized with Transcription Factor Staining Buffer Kit (PF00011).