

À des fins de recherche uniquement

Anticorps Monoclonal anti-PTPRO

Numéro de catalogue: CL488-67000



Informations de base

Numéro de catalogue: CL488-67000	Numéro d'acquisition GenBank: BC035960	Méthode de purification: Purification par protéine A
Taille: 100ul , Concentration: 1000 µg/ml by Nanodrop;	Identification du gène (NCBI): 5800	CloneNo.: 2F2B4
Hôte: Mouse	Nom complet: protein tyrosine phosphatase, receptor type, O	Dilutions recommandées: IF 1:50-1:500
Isotype: IgG2b	MW calculé 138 kDa	Excitation/Emission maxima wavelengths: 493 nm / 522 nm
Immunogen Catalog Number: AG8284	MW observés: 160 kDa, 180-220 kDa	

Applications

Applications testées: IF	Contrôles positifs: IF : tissu rénal humain,
Spécificité de l'espèce: Humain, porc	

Informations générales

PTPRO (receptor-type tyrosine-protein phosphatase O) is also named as GLEPP1, PTPU2 and belongs to the protein-tyrosine phosphatase family. The protein is a receptor-like membrane protein tyrosine phosphatase expressed at the apical membrane of the podocyte foot processes in the kidney (PMID:21722858). The 1,159-amino acid predicted mature protein contains a large extracellular domain, a single transmembrane domain, and a single intracellular PTPase domain. Defects in PTPRO are the cause of nephrotic syndrome type 6 (NPH56). In reducing conditions, PTPRO can form a smear from 180 to 220 kDa; In non-reducing conditions, a band appears around 350 kDa, which likely represents the dimeric form of full-length PTPRO (PMID: 19573017).

Stockage

Stockage:
Stocker à -20 °C. Éviter toute exposition à la lumière.
Tampon de stockage:
PBS avec glycérol à 50 %, Proclin300 à 0,05 % et BSA à 0,5 %, pH 7,3.
L'aliquotage n'est pas nécessaire pour le stockage à -20C

***** Les 20ul contiennent 0,1% de BSA.**

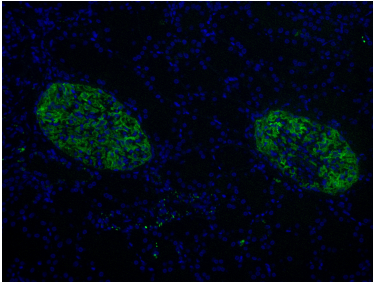
For technical support and original validation data for this product please contact:

T: 1 (888) 4PTGLAB (1-888-478-4522) (toll free
in USA), or 1(312) 455-8498 (outside USA)

E: proteintech@ptglab.com
W: ptglab.com

This product is exclusively available under Proteintech Group brand and is not available to purchase from any other manufacturer.

Données de validation sélectionnées



Immunofluorescent analysis of (4% PFA) fixed human kidney tissue using CoraLite® Plus 488 PTPRO antibody (CL488-67000, Clone: 2F2B4) at dilution of 1:200.