

À des fins de recherche uniquement

Anticorps Monoclonal anti-MAP2

Numéro de catalogue: CL488-67015



Informations de base

Numéro de catalogue: CL488-67015	Numéro d'acquisition GenBank: BC038857	Méthode de purification: Purification par protéine A
Taille: 100ul , Concentration: 784 µg/ml by Nanodrop;	Identification du gène (NCBI): 4133	CloneNo.: 1C3E6
Hôte: Mouse	Nom complet: microtubule-associated protein 2	Dilutions recommandées: IF 1:50-1:500
Isotype: IgG2b	MW calculé 200 kDa	Excitation/Emission maxima wavelengths: 493 nm / 522 nm
Immunogen Catalog Number: AG11349		

Applications

Applications testées: FC (Intra), IF	Contrôles positifs: IF : tissu cérébral de rat,
Spécificité de l'espèce: Humain, rat, souris	

Informations générales

MAP2 (microtubule-associated protein 2) is a cytoskeleton protein abundant in brain and has important role in neuronal morphogenesis. Multiple high molecular weight (MW) and low molecular weight (MW) MAP2 isoforms are expressed within axons, dendrites, and cell bodies. The expression of MAP2 is regulated in both a tissue- and developmentally specific manner. MAP2 antibodies have been widely used to mark the neuron or dendrite formation.

Stockage

Stockage:
Stocker à -20 °C. Éviter toute exposition à la lumière. Stable pendant un an après l'expédition.
Tampon de stockage:
PBS avec glycérol à 50 %, Proclin300 à 0,05 % et BSA à 0,5 %, pH 7,3.
L'aliquotage n'est pas nécessaire pour le stockage à -20C

***** Les 20ul contiennent 0,1% de BSA.**

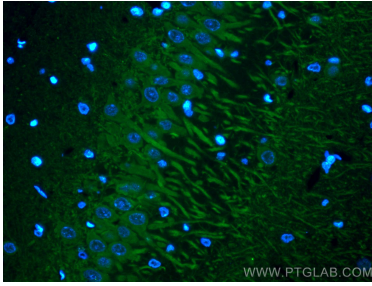
For technical support and original validation data for this product please contact:

T: 1 (888) 4PTGLAB (1-888-478-4522) (toll free
in USA), or 1(312) 455-8498 (outside USA)

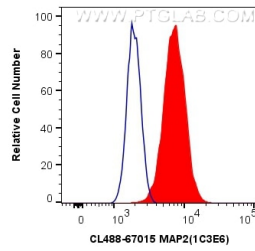
E: proteintech@ptglab.com
W: ptglab.com

This product is exclusively available under Proteintech Group brand and is not available to purchase from any other manufacturer.

Données de validation sélectionnées



Immunofluorescent analysis of (4% PFA) fixed rat brain tissue using CoraLite® Plus 488 MAP2 antibody (CL488-67015, Clone: 1C3E6) at dilution of 1:200.



1×10^6 Neuro-2a cells were intracellularly stained with 0.8 μ g CoraLite® Plus 488 Anti-Human MAP2 (CL488-67015, Clone:1C3E6) (red), or 0.8 μ g Mouse IgG2b Isotype Control (CL488-66360-3, Clone: K11B8C4B5) (blue). Cells were fixed with 4% PFA and permeabilized with Flow Cytometry Perm Buffer (PF00011-C).