

À des fins de recherche uniquement

# Anticorps Monoclonal anti-LGMN

Numéro de catalogue: CL488-67017



## Informations de base

Numéro de catalogue: CL488-67017	Numéro d'acquisition GenBank: BC003061	Méthode de purification: Purification par protéine G
Taille: 100ul, Concentration: 1000 µg/ml by Nanodrop;	Identification du gène (NCBI): 5641	CloneNo.: 1F2B12
Hôte: Mouse	Nom complet: legumain	Dilutions recommandées: IF 1:50-1:500
Isotype: IgG1	MW calculé 49 kDa	Excitation/Emission maxima wavelengths: 493 nm / 522 nm
Immunogen Catalog Number: AG7218	MW observés: 36 kDa	

## Applications

Applications testées: IF	Contrôles positifs: IF : tissu rénal humain,
Spécificité de l'espèce: Humain	

## Informations générales

LGMN (Legumain), also known as asparaginyl endopeptidase or AEP, is a broadly expressed lysosomal cysteine endopeptidase that belongs to peptidase family C13 and specifically hydrolyzes substrate asparaginyl bonds (PMID: 9065484). LGMN directly regulates diverse physiological and pathological processes by remodeling tissue-specific targets (PMID: 25205715, 21292981, 18820679). In addition, LGMN indirectly contributes to atherosclerotic plaque instability through activation of cathepsin L in the arterial ECM (PMID: 19671471, 18377911). LGMN is secreted as inactive prolegumain (56 kDa) and processed into enzymatically active 46 and 36 kDa forms, as well as a 17 kDa enzymatically inactive C-terminal fragment (PMID: 28162997, PMID: 19671471).

## Stockage

**Stockage:**  
Stocker à -20 °C. Éviter toute exposition à la lumière.  
**Tampon de stockage:**  
PBS avec glycérol à 50 %, Proclin300 à 0,05 % et BSA à 0,5 %, pH 7,3.  
L'aliquotage n'est pas nécessaire pour le stockage à -20C

**\*\*\* Les 20ul contiennent 0,1% de BSA.**

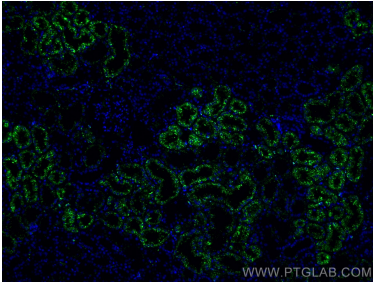
For technical support and original validation data for this product please contact:

T: 1 (888) 4PTGLAB (1-888-478-4522) (toll free  
in USA), or 1(312) 455-8498 (outside USA)

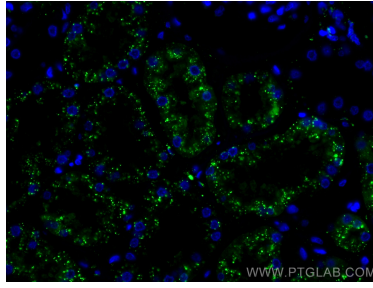
E: [proteintech@ptglab.com](mailto:proteintech@ptglab.com)  
W: [ptglab.com](http://ptglab.com)

**This product is exclusively available under Proteintech Group brand and is not available to purchase from any other manufacturer.**

## Données de validation sélectionnées



Immunofluorescent analysis of (4% PFA) fixed human kidney tissue using CoraLite® Plus 488 LGMN antibody (CL488-67017, Clone: 1F2B12 ) at dilution of 1:200.



Immunofluorescent analysis of (4% PFA) fixed human kidney tissue using CoraLite® Plus 488 LGMN antibody (CL488-67017, Clone: 1F2B12 ) at dilution of 1:200.