

À des fins de recherche uniquement

Anticorps Monoclonal anti-Endoglin/CD105



Numéro de catalogue: **CL488-67075**

Informations de base

Numéro de catalogue: CL488-67075	Numéro d'acquisition GenBank: BC014271	Méthode de purification: Purification par protéine A
Taille: 100ul , Concentration: 1000 µg/ml by Nanodrop;	Identification du gène (NCBI): 2022	CloneNo.: 2D5E8
Hôte: Mouse	Nom complet: endoglin	Dilutions recommandées: IF 1:50-1:500
Isotype: IgG2b	MW calculé 71 kDa	Excitation/Emission maxima wavelengths: 493 nm / 522 nm
Immunogen Catalog Number: AG27837	MW observés: 95-100 kDa	

Applications

Applications testées: FC (Intra), IF	Contrôles positifs: IF : tissu de cancer du foie humain,
Spécificité de l'espèce: Humain	

Informations générales

Endoglin (ENG, CD105) is a homodimeric cell membrane glycoprotein of 180 kDa, composed of disulphide-linked subunits of 95 kDa. Endoglin is a proliferation-associated and hypoxia-inducible protein mainly expressed on vascular endothelial cells. It acts as an accessory receptor for transforming growth factor beta (TGF- β) and is involved in vascular development and remodelling. The important role of Endoglin in angiogenesis and in tumor progression makes it an ideal target for antiangiogenic therapy and a good marker for tumor prognosis. (PMID: 1326540; 14528280; 21737653; 12773481)

Stockage

Stockage:
Stocker à -20 °C. Éviter toute exposition à la lumière. Stable pendant un an après l'expédition.
Tampon de stockage:
PBS avec glycérol à 50 %, Proclin300 à 0,05 % et BSA à 0,5 %, pH 7,3.
L'aliquotage n'est pas nécessaire pour le stockage à -20C

***** Les 20ul contiennent 0,1% de BSA.**

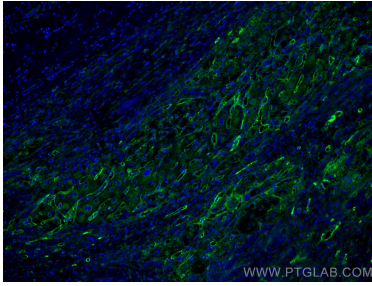
For technical support and original validation data for this product please contact:

T: 1 (888) 4PTGLAB (1-888-478-4522) (toll free
in USA), or 1(312) 455-8498 (outside USA)

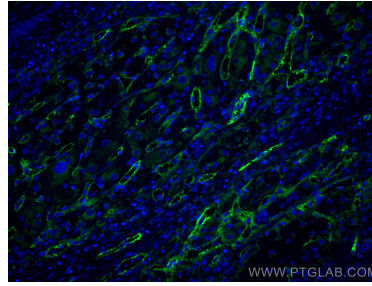
E: proteintech@ptglab.com
W: ptglab.com

This product is exclusively available under Proteintech Group brand and is not available to purchase from any other manufacturer.

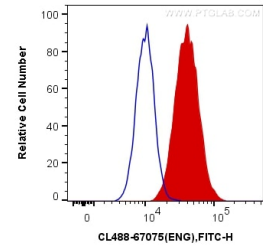
Données de validation sélectionnées



Immunofluorescent analysis of (4% PFA) fixed Human liver cancer tissue using CoraLite® Plus 488 Endoglin/CD105 antibody (CL488-67075, Clone: 2D5E8) at dilution of 1:200.



Immunofluorescent analysis of (4% PFA) fixed Human liver cancer tissue using CoraLite® Plus 488 Endoglin/CD105 antibody (CL488-67075, Clone: 2D5E8) at dilution of 1:200.



1X10⁶ HUVEC cells were intracellularly stained with 0.4 ug CoraLite® Plus 488 Anti-Human Endoglin/CD105 (CL488-67075, Clone:2D5E8) (red), or 0.4 ug Mouse IgG2b Isotype Control (CL488-66360-3, Clone: K11B8C4B5) (blue). Cells were fixed with 4% PFA and permeabilized with Flow Cytometry Perm Buffer (PF00011-C).