

À des fins de recherche uniquement

Anticorps Monoclonal anti-APBB1

Numéro de catalogue: CL488-67077



Informations de base

Numéro de catalogue: CL488-67077	Numéro d'acquisition GenBank: BC010854	Méthode de purification: Purification par protéine G
Taille: 100ul , Concentration: 1000 µg/ml by Nanodrop;	Identification du gène (NCBI): 322	CloneNo.: 1B9G10
Hôte: Mouse	Nom complet: amyloid beta (A4) precursor protein- binding, family B, member 1 (Fe65)	Dilutions recommandées: IF 1:50-1:500
Isotype: IgG1	MW calculé 708 aa, 77 kDa	Excitation/Emission maxima wavelengths: 493 nm / 522 nm
Immunogen Catalog Number: AG27436		

Applications

Applications testées: IF	Contrôles positifs: IF : tissu cérébral de souris,
Spécificité de l'espèce: Humain, porc, rat, souris	

Informations générales

APBB1(Amyloid-beta A4 precursor protein-binding family B member 1) encoded FE65 protein. It was known as a binding partner of APP in the Alzheimer's disease studies, and expressed at high levels in brain especially in cerebellum, hippocampus, and cortex. FE65 and FE65-like (FE65L or FE65L1) proteins are cytoplasmic adaptor proteins that possess two phosphotyrosine binding domains (PTB1 and PTB2) and one WW binding domain (PMID:22429478). After phosphorylation modification, the band of FE65 protein would appear around 100 kDa. However, some tested a non-specific band at 55-60 kDa, it was refer to as FE65-like protein(PMID:12843239).

Stockage

Stockage:
Stocker à -20 °C. Éviter toute exposition à la lumière.
Tampon de stockage:
PBS avec glycérol à 50 %, Proclin300 à 0,05 % et BSA à 0,5 %, pH 7,3.
L'aliquotage n'est pas nécessaire pour le stockage à -20C

*** Les 20ul contiennent 0,1% de BSA.

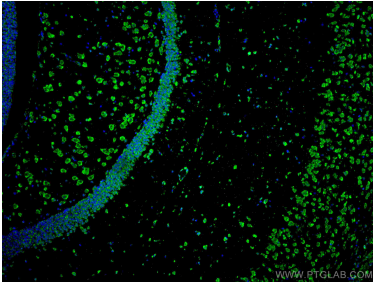
For technical support and original validation data for this product please contact:

T: 1 (888) 4PTGLAB (1-888-478-4522) (toll free
in USA), or 1(312) 455-8498 (outside USA)

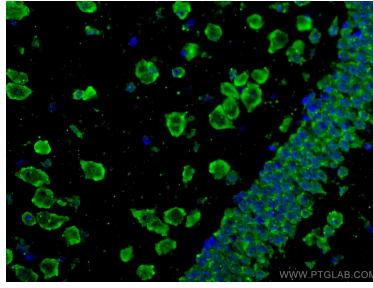
E: proteintech@ptglab.com
W: ptglab.com

This product is exclusively available under Proteintech Group brand and is not available to purchase from any other manufacturer.

Données de validation sélectionnées



Immunofluorescent analysis of (4% PFA) fixed mouse brain tissue using CoraLite® Plus 488 APBB1 antibody (CL488-67077, Clone: 1B9G10) at dilution of 1:200.



Immunofluorescent analysis of (4% PFA) fixed mouse brain tissue using CoraLite® Plus 488 APBB1 antibody (CL488-67077, Clone: 1B9G10) at dilution of 1:200.