

À des fins de recherche uniquement

Anticorps Monoclonal anti-IDE

Numéro de catalogue: CL488-67106



Informations de base

| | | |
|---|---|---|
| Numéro de catalogue: CL488-67106 | Numéro d'acquisition GenBank: BC096336 | Méthode de purification: Purification par protéine A |
| Taille: 100ul, Concentration: 1000 µg/ml by Nanodrop; | Identification du gène (NCBI): 3416 | CloneNo.: 3E10G1 |
| Hôte: Mouse | Nom complet: Abeta degrading protease | Dilutions recommandées: IF 1:50-1:500 |
| Isotype: IgG2b | MW calculé 1019 aa, 118 kDa | Excitation/Emission maxima wavelengths: 493 nm / 522 nm |
| Immunogen Catalog Number: AG17161 | MW observés: 100-120 kDa | |

Applications

| | |
|---|--|
| Applications testées: FC (Intra), IF | Contrôles positifs: IF : cellules A549, |
| Spécificité de l'espèce: Humain, rat, souris | |

Informations générales

IDE(INS-degrading enzyme) belongs to the peptidase M16 family. It is also known as insulysin and is a 110-kD neutral metallopeptidase that can degrade a number of peptides, including INS and beta-amyloid(PMID:9830016). The reduction of IDE expression may be a risk factor for AD, and that IDE may interact with APOE status to affect beta-amyloid metabolism(PMID:12507914). It can exist as a homodimer and form higher oligomers(PMID:17613531).

Stockage

Stockage:
Stocker à -20 °C. Éviter toute exposition à la lumière. Stable pendant un an après l'expédition.
Tampon de stockage:
PBS avec glycérol à 50 %, Proclin300 à 0,05 % et BSA à 0,5 %, pH 7,3.
L'aliquotage n'est pas nécessaire pour le stockage à -20C

***** Les 20ul contiennent 0,1% de BSA.**

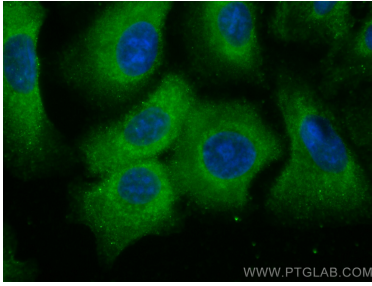
For technical support and original validation data for this product please contact:

T: 1 (888) 4PTGLAB (1-888-478-4522) (toll free
in USA), or 1(312) 455-8498 (outside USA)

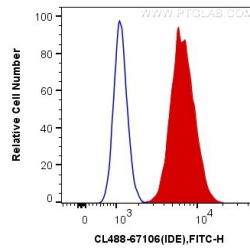
E: proteintech@ptglab.com
W: ptglab.com

This product is exclusively available under Proteintech Group brand and is not available to purchase from any other manufacturer.

Données de validation sélectionnées



Immunofluorescent analysis of (-20°C Methanol) fixed A549 cells using Coralite® Plus 488 IDE antibody (CL488-67106, Clone: 3E10G1) at dilution of 1:200.



1X10⁶ A549 cells were intracellularly stained with 0.4 ug Coralite® Plus 488 Anti-Human IDE (CL488-67106, Clone:3E10G1) (red), or 0.4 ug Mouse IgG2b Isotype Control (CL488-66360-3, Clone: K11B8C4B5) (blue). Cells were fixed with 4% PFA and permeabilized with Flow Cytometry Perm Buffer (PF00011-C).