

À des fins de recherche uniquement

# Anticorps Monoclonal anti-FLNA

Numéro de catalogue: **CL488-67133**



## Informations de base

Numéro de catalogue: CL488-67133	Numéro d'acquisition GenBank: BC014654	Méthode de purification: Purification par protéine A
Taille: 100ul , Concentration: 1000 µg/ml by Nanodrop;	Identification du gène (NCBI): 2316	CloneNo.: 1G4H3
Hôte: Mouse	Nom complet: filamin A, alpha (actin binding protein 280)	Dilutions recommandées: IF 1:200-1:800
Isotype: IgG2a	MW calculé 2647 aa, 280 kDa	Excitation/Emission maxima wavelengths: 493 nm / 522 nm
Immunogen Catalog Number: AG23291	MW observés: 280 kDa	

## Applications

Applications testées: IF	Contrôles positifs: IF : cellules HeLa,
Spécificité de l'espèce: Humain	

## Informations générales

FLNA encodes a 280 kDa widely expressed actin binding protein called filamin A which can crosslinks actin filaments and links actin filaments to membrane glycoproteins to form a three-dimensional network (PMID: 29931263). And filamin A could interact with many other proteins, involved in receptor activation, cell migration and adhesion, cell proliferation, inflammation and tumorigenesis, studies have been reported that FLNA overexpressed in multiple types of tumors, suggesting FLNA may involved in cancer aggressiveness (PMID: 29100390). What's more, FLNA is an causative gene of periventricular nodular heterotopia (PNH) (PMID: 29062687)

## Stockage

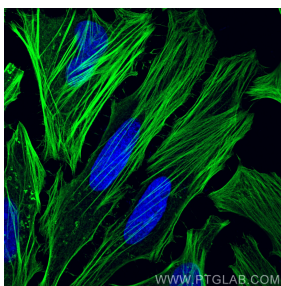
Stockage:  
Stocker à -20 °C. Éviter toute exposition à la lumière.  
Tampon de stockage:  
PBS avec glycérol à 50 %, Proclin300 à 0,05 % et BSA à 0,5 %, pH 7,3.  
L'aliquotage n'est pas nécessaire pour le stockage à -20C

\*\*\* Les 20ul contiennent 0,1% de BSA.

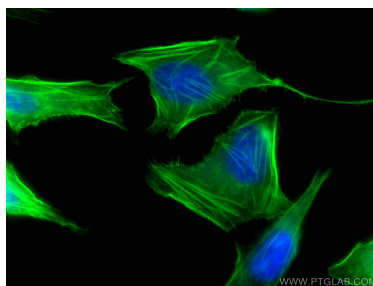
For technical support and original validation data for this product please contact:  
T: 1 (888) 4PTGLAB (1-888-478-4522) (toll free in USA), or 1(312) 455-8498 (outside USA)  
E: [proteintech@ptglab.com](mailto:proteintech@ptglab.com)  
W: [ptglab.com](http://ptglab.com)

This product is exclusively available under Proteintech Group brand and is not available to purchase from any other manufacturer.

## Données de validation sélectionnées



Immunofluorescent analysis of (-20°C Methanol) fixed HeLa cells using CoraLite® Plus 488 FLNA antibody (CL488-67133, Clone: 1G4H3 ) at dilution of 1:200.



Immunofluorescent analysis of (-20°C Ethanol) fixed HeLa cells using CoraLite® Plus 488-conjugated FLNA antibody (CL488-67133, Clone: 1G4H3 ) at dilution of 1:400.