

À des fins de recherche uniquement

Anticorps Monoclonal anti-GBP1

Numéro de catalogue: **CL488-67161**



Informations de base

Numéro de catalogue: CL488-67161	Numéro d'acquisition GenBank: BC002666	Méthode de purification: Purification par protéine A
Taille: 100ul , Concentration: 1000 µg/ml by Nanodrop;	Identification du gène (NCBI): 2633	CloneNo.: 2A10E8
Hôte: Mouse	Nom complet: GTP binding protein 1	Dilutions recommandées: IF 1:50-1:500
Isotype: IgG2b	MW calculé 68 kDa	Excitation/Emission maxima wavelengths: 493 nm / 522 nm
Immunogen Catalog Number: AG7767	MW observés: 68 kDa	

Applications

Applications testées: IF	Contrôles positifs: IF : cellules MCF-7,
Spécificité de l'espèce: Humain, porc, rat	

Informations générales

Guanylate binding protein 1 (GBP1) belongs to the dynamin superfamily of large GTPases. The expression of GBP1 is induced by IFN and GBP1 is characterized by its ability to specifically bind guanine nucleotides such as GMP, GDP, and GTP and its ability to hydrolyze GTP to GDP and GMP. GBP1 is induced in response to type I and type II IFNs and as such plays a role in protective immunity against a spectrum of intracellular pathogens ranging from viruses to bacteria to protozoa, such as negative-strand RNA Rhabdovirus, vesicular stomatitis virus and the positive-strand RNA Picornavirus, encephalomyocarditis virus in cultured cells, the inhibition of Chlamydia trachomatis, Toxoplasma gondii, and Salmonella enterica.

Stockage

Stockage:
Stocker à -20 °C. Éviter toute exposition à la lumière. Stable pendant un an après l'expédition.
Tampon de stockage:
PBS avec glycérol à 50 %, Proclin300 à 0,05 % et BSA à 0,5 %, pH 7,3.
L'aliquotage n'est pas nécessaire pour le stockage à -20C

***** Les 20ul contiennent 0,1% de BSA.**

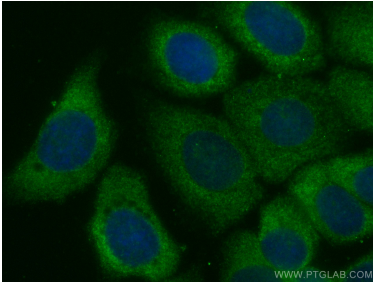
For technical support and original validation data for this product please contact:

T: 1 (888) 4PTGLAB (1-888-478-4522) (toll free
in USA), or 1(312) 455-8498 (outside USA)

E: proteintech@ptglab.com
W: ptglab.com

This product is exclusively available under Proteintech Group brand and is not available to purchase from any other manufacturer.

Données de validation sélectionnées



Immunofluorescent analysis of (-20°C Methanol) fixed MCF-7 cells using CoraLite® Plus 488 GBP1 antibody (CL488-67161, Clone: 2A10E8) at dilution of 1:100.