

À des fins de recherche uniquement

Anticorps Monoclonal anti-GCK

Numéro de catalogue: CL488-67216



Informations de base

Numéro de catalogue: CL488-67216	Numéro d'acquisition GenBank: BC001890	Méthode de purification: Purification par protéine G
Taille: 100ul , Concentration: 1000 µg/ml by Nanodrop;	Identification du gène (NCBI): 2645	CloneNo.: 1C3A3
Hôte: Mouse	Nom complet: glucokinase (hexokinase 4)	Dilutions recommandées: IF 1:50-1:500
Isotype: IgG1	MW calculé 52 kDa	Excitation/Emission maxima wavelengths: 493 nm / 522 nm
Immunogen Catalog Number: AG8116	MW observés: 52 kDa	

Applications

Applications testées: IF	Contrôles positifs: IF : tissu de cancer du foie humain,
Spécificité de l'espèce: Humain, porc, rat, souris	

Informations générales

Glucokinase (GCK) is a structurally and functionally unique member of hexokinase family. It is expressed only in mammalian liver and pancreatic islet beta cells. Because of its unique functional characteristics, the enzyme plays an important regulatory role in glucose metabolism. The rate of glucose metabolism in liver and pancreas is a function of the activity of the enzyme (PMID:1740341). Moreover, GCK has been found to have relationship with diabetes. Defects in GCK are the cause of maturity-onset diabetes of the young type 2 (MODY2) and familial hyperinsulinemic hypoglycemia type 3 (HHF3). It has 3 isoforms produced by alternative splicing with the same molecular mass of 52 kDa.

Stockage

Stockage:
Stocker à -20 °C. Éviter toute exposition à la lumière.
Tampon de stockage:
PBS avec glycérol à 50 %, Proclin300 à 0,05 % et BSA à 0,5 %, pH 7,3.
L'aliquotage n'est pas nécessaire pour le stockage à -20C

***** Les 20ul contiennent 0,1% de BSA.**

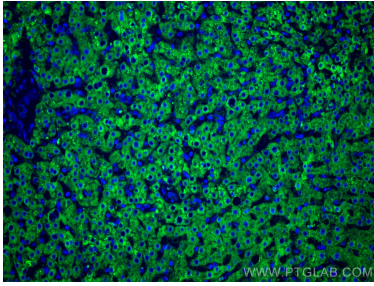
For technical support and original validation data for this product please contact:

T: 1 (888) 4PTGLAB (1-888-478-4522) (toll free
in USA), or 1(312) 455-8498 (outside USA)

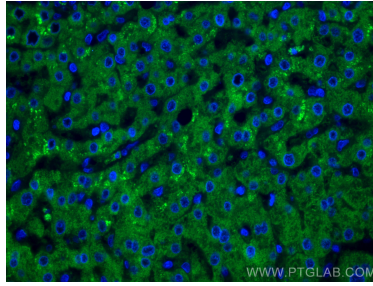
E: proteintech@ptglab.com
W: ptglab.com

This product is exclusively available under Proteintech Group brand and is not available to purchase from any other manufacturer.

Données de validation sélectionnées



Immunofluorescent analysis of (4% PFA) fixed human liver cancer tissue using CoraLite® Plus 488 GCK antibody (CL488-67216, Clone: 1C3A3) at dilution of 1:200.



Immunofluorescent analysis of (4% PFA) fixed human liver cancer tissue using CoraLite® Plus 488 GCK antibody (CL488-67216, Clone: 1C3A3) at dilution of 1:200.