

À des fins de recherche uniquement

# Anticorps Monoclonal anti-Glucagon

Numéro de catalogue: CL488-67286

1 Publications



## Informations de base

Numéro de catalogue: CL488-67286	Numéro d'acquisition GenBank: BC005278	Méthode de purification: Purification par protéine G
Taille: 100ul , Concentration: 1000 µg/ml by Nanodrop;	Identification du gène (NCBI): 2641	CloneNo.: 2A8G1
Hôte: Mouse	Nom complet: glucagon	Dilutions recommandées: IF 1:200-1:800
Isotype: IgG1	MW calculé 180 aa, 21 kDa	Excitation/Emission maxima wavelengths: 493 nm / 522 nm
Immunogen Catalog Number: AG10629		

## Applications

Applications testées: IF	Contrôles positifs: IF : tissu pancréatique de souris,
Demandes citées: IF	
Spécificité de l'espèce: Humain, souris	
Espèces citées: souris	

## Informations générales

Glucagon is a 29-amino acid peptide hormone secreted from the pancreatic alpha cells with a powerful stimulatory effect on hepatic glucose production acting to increase plasma glucose levels. Glucagon is best known as the counter-regulatory hormone to INS, and normal glucose homeostasis depends largely on the balanced secretion of INS and glucagon from the pancreatic beta and alpha cells, respectively. The regulation of glucose metabolism by glucagon is mediated by its direct action on the peripheral tissues such as the liver and also by the brain. Glucagon is also released postprandially in a transient manner, which was shown to be involved in inhibition of food intake via reduction of meal size.

## Publications notables

Autrice	Pubmed ID	Journal	Application
Althea N Waldhart	37168572	iScience	IF

## Stockage

Stockage:  
Stocker à -20 °C. Éviter toute exposition à la lumière.  
Tampon de stockage:  
PBS avec glycérol à 50 %, Proclin300 à 0,05 % et BSA à 0,5 %, pH 7,3.  
L'aliquotage n'est pas nécessaire pour le stockage à -20C

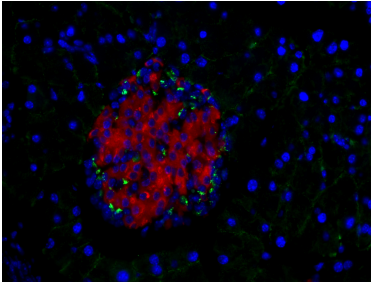
\*\*\* Les 20ul contiennent 0,1% de BSA.

For technical support and original validation data for this product please contact:  
T: 1 (888) 4PTGLAB (1-888-478-4522) (toll free in USA), or 1(312) 455-8498 (outside USA)  
E: proteintech@ptglab.com  
W: ptglab.com

This product is exclusively available under Proteintech Group brand and is not available to purchase from any other manufacturer.

---

## Données de validation sélectionnées



Immunofluorescent analysis of (4% PFA) fixed mouse pancreas tissue using the CoraLite® Plus 488-conjugated version of this antibody, CL488-67286 (Glucagon antibody) and CL594-66198 (INS antibody), at dilution of 1:400. The B cells of the islets of Langerhans was labelled in red with CL594-66198(INS antibody).