

À des fins de recherche uniquement

Anticorps Monoclonal anti-CD107a / LAMP1



Numéro de catalogue: **CL488-67300**

Informations de base

Numéro de catalogue: CL488-67300	Numéro d'acquisition GenBank: BC021288	Méthode de purification: Purification par protéine A
Taille: 100ul , Concentration: 1000 µg/ml by Nanodrop;	Identification du gène (NCBI): 3916	CloneNo.: 3B2E9
Hôte: Mouse	Nom complet: lysosomal-associated membrane protein 1	Dilutions recommandées: IF 1:50-1:500
Isotype: IgG2b	MW calculé 417 aa, 45 kDa	Excitation/Emission maxima wavelengths: 493 nm / 522 nm
Immunogen Catalog Number: AG28869	MW observés: 90-120 kDa	

Applications

Applications testées: FC (Intra), IF	Contrôles positifs: IF : tissu de cancer du foie humain,
Spécificité de l'espèce: Humain	

Informations générales

LAMP1 (also known as CD107a) is a 90-120 kDa heavily glycosylated membrane protein enriched in the lysosomal membrane. LAMP1 functions to provide selectins with carbohydrate ligands. This protein has also been shown to be a marker of degranulation on lymphocytes such as CD8+ and NK cells and may also play a role in tumor cell differentiation and metastasis.

Stockage

Stockage:
Stocker à -20 °C. Éviter toute exposition à la lumière. Stable pendant un an après l'expédition.
Tampon de stockage:
PBS avec glycérol à 50 %, Proclin300 à 0,05 % et BSA à 0,5 %, pH 7,3.
L'aliquotage n'est pas nécessaire pour le stockage à -20C

***** Les 20ul contiennent 0,1% de BSA.**

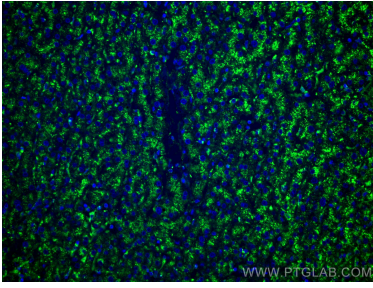
For technical support and original validation data for this product please contact:

T: 1 (888) 4PTGLAB (1-888-478-4522) (toll free
in USA), or 1(312) 455-8498 (outside USA)

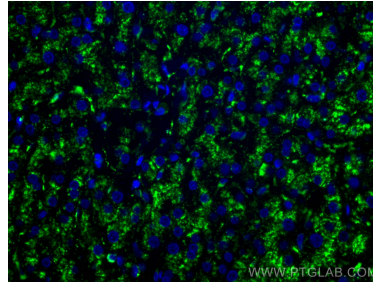
E: proteintech@ptglab.com
W: ptglab.com

This product is exclusively available under Proteintech Group brand and is not available to purchase from any other manufacturer.

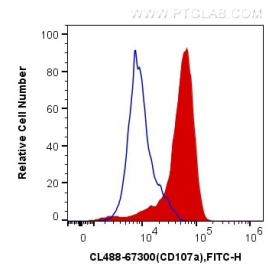
Données de validation sélectionnées



Immunofluorescent analysis of (4% PFA) fixed human liver cancer tissue using CoraLite® Plus 488 CD107a antibody (CL488-67300, Clone: 3B2E9) at dilution of 1:200.



Immunofluorescent analysis of (4% PFA) fixed human liver cancer tissue using CoraLite® Plus 488 CD107a antibody (CL488-67300, Clone: 3B2E9) at dilution of 1:200.



1X10⁶ NK92 were intracellularly stained with 0.4 ug CoraLite® Plus 488 Anti-Human CD107a / LAMP1 (CL488-67300, Clone:3B2E9) (red), or 0.4 ug x. Cells were fixed with 4% PFA and permeabilized with Flow Cytometry Perm Buffer (PF00011-C).