

À des fins de recherche uniquement

# Anticorps Monoclonal anti-MTMR2

Numéro de catalogue: **CL488-67312** **Phare**



## Informations de base

Numéro de catalogue: CL488-67312	Numéro d'acquisition GenBank: BC052990	Méthode de purification: Purification par protéine A
Taille: 100ul , Concentration: 1000 µg/ml by Nanodrop;	Identification du gène (NCBI): 8898	CloneNo.: 1B11B7
Hôte: Mouse	Nom complet: myotubularin related protein 2	Excitation/Emission maxima wavelengths: 493 nm / 522 nm
Isotype: IgG2b	MW calculé: 73 kDa	
Immunogen Catalog Number: AG28413	MW observés: 66-73 kDa	

## Applications

Applications testées:  
FC (Intra)  
Spécificité de l'espèce:  
Humain

## Informations générales

MTMR2(myotubularin-related protein 2) is also named as KIAA1073 and belongs to the non-receptor class myotubularin subfamily, which is characterized by the presence of a phosphatase domain. It may regulate vesicular trafficking in Schwann cells (PMID:17880751) and its reversible phosphorylation represents a critical mechanism for regulating the subcellular localization of MTMR2(PMID:21372139). MTMR2 is a 73 kDa protein in its monomeric form and exist as a dimer within cells and the protein re-localizes to membranes in hypo-osmotic settings(PMID:16399794). Defects in MTMR2 are the cause of Charcot-Marie-Tooth disease type 4B1 (CMT4B1). MTMR2 has two isoforms with the molecular mass of 73 and 66 kDa.

## Stockage

Stockage:  
Stocker à -20 °C. Éviter toute exposition à la lumière. Stable pendant un an après l'expédition.  
Tampon de stockage:  
PBS avec glycérol à 50 %, Proclin300 à 0,05 % et BSA à 0,5 %, pH 7,3.  
L'aliquotage n'est pas nécessaire pour le stockage à -20C

**\*\*\* Les 20ul contiennent 0,1% de BSA.**

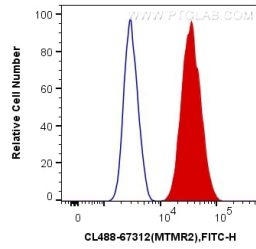
For technical support and original validation data for this product please contact:

T: 1 (888) 4PTGLAB (1-888-478-4522) (toll free  
in USA), or 1(312) 455-8498 (outside USA)

E: [proteintech@ptglab.com](mailto:proteintech@ptglab.com)  
W: [ptglab.com](http://ptglab.com)

**This product is exclusively available under Proteintech Group brand and is not available to purchase from any other manufacturer.**

## Données de validation sélectionnées



$1 \times 10^6$  HeLa cells were intracellularly stained with 0.4  $\mu\text{g}$  CoraLite® Plus 488 Anti-Human MTMR2 (CL488-67312, Clone:1B11B7) (red), or 0.4  $\mu\text{g}$  Mouse IgG2b Isotype Control (CL488-66360-3, Clone: K11B8C4B5) (blue). Cells were fixed with 4% PFA and permeabilized with Flow Cytometry Perm Buffer (PF00011-C).