

À des fins de recherche uniquement

# Anticorps Monoclonal anti-TLR8

Numéro de catalogue: CL488-67317



## Informations de base

Numéro de catalogue: CL488-67317	Numéro d'acquisition GenBank: BC101075	Méthode de purification: Purification par protéine G
Taille: 100ul , Concentration: 1000 µg/ml by Nanodrop;	Identification du gène (NCBI): 51311	CloneNo.: 3B6A4
Hôte: Mouse	Nom complet: toll-like receptor 8	Dilutions recommandées: IF 1:50-1:500
Isotype: IgG1	MW calculé 1041 aa, 120 kDa	Excitation/Emission maxima wavelengths: 493 nm / 522 nm
Immunogen Catalog Number: AG16566	MW observés: 120 kDa	

## Applications

Applications testées: IF	Contrôles positifs: IF : tissu d'amygdalite humain,
Spécificité de l'espèce: Humain	

## Informations générales

Toll-like receptors (TLRs) are a group of pathogen recognition receptors (PRRs) that can be divided into two subfamilies depending on their subcellular localization (PMID: 32268138). Toll-like receptor 8 (TLR8), a sensor for pathogen-derived single-stranded RNA (ssRNA), binds to uridine (Uri) and ssRNA to induce defense responses (PMID:30535046). TLR8 proteins were expressed in spleen, epididymal sperm, testicular sperm cells, and Leydig cells but were weak in Sertoli cells. It can identify two isoforms, 120 and 122 kDa.

## Stockage

**Stockage:**  
Stocker à -20 °C. Éviter toute exposition à la lumière.  
**Tampon de stockage:**  
PBS avec glycérol à 50 %, Proclin300 à 0,05 % et BSA à 0,5 %, pH 7,3.  
L'aliquotage n'est pas nécessaire pour le stockage à -20C

**\*\*\* Les 20ul contiennent 0,1% de BSA.**

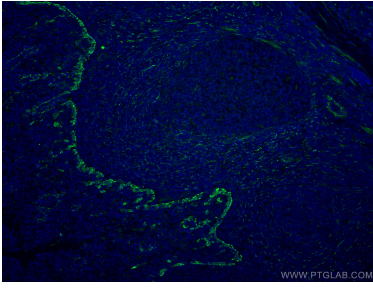
For technical support and original validation data for this product please contact:

T: 1 (888) 4PTGLAB (1-888-478-4522) (toll free  
in USA), or 1(312) 455-8498 (outside USA)

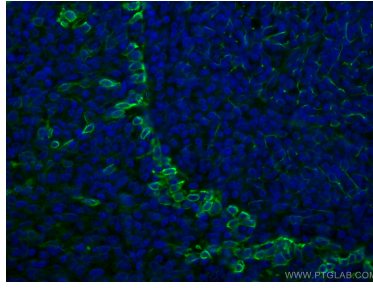
E: proteintech@ptglab.com  
W: ptglab.com

This product is exclusively available under Proteintech Group brand and is not available to purchase from any other manufacturer.

## Données de validation sélectionnées



Immunofluorescent analysis of (4% PFA) fixed human tonsillitis tissue using CoraLite® Plus 488 TLR8 antibody (CL488-67317, Clone: 3B6A4) at dilution of 1:200.



Immunofluorescent analysis of (4% PFA) fixed human tonsillitis tissue using CoraLite® Plus 488 TLR8 antibody (CL488-67317, Clone: 3B6A4) at dilution of 1:200.