

À des fins de recherche uniquement

# Anticorps Monoclonal anti-TDP-43 (C-terminal)



Numéro de catalogue: **CL488-67345**

## Informations de base

Numéro de catalogue: CL488-67345	Numéro d'acquisition GenBank: NM_007375	Méthode de purification: Purification par protéine A
Taille: 100ul , Concentration: 1000 µg/ml by Nanodrop;	Identification du gène (NCBI): 23435	CloneNo.: 1G5F6
Hôte: Mouse	Nom complet: TAR DNA binding protein	Dilutions recommandées: IF 1:150-1:600
Isotype: IgG2a	MW calculé 43 kDa	Excitation/Emission maxima wavelengths: 493 nm / 522 nm
	MW observés: 43-45 kDa	

## Applications

Applications testées: IF	Contrôles positifs: IF : tissu cérébral de rat,
Spécificité de l'espèce: Humain, rat, souris	

## Informations générales

Transactivation response (TAR), DNA-binding protein of 43 kDa (also known as TARDBP or TDP-43), was first isolated as a transcriptional inactivator binding to the TAR DNA element of the HIV-1 virus. Neumann et al. (2006) found that a hyperphosphorylated, ubiquitinated, and cleaved form of TARDBP, known as pathologic TDP-43, is the major component of the tau-negative and ubiquitin-positive inclusions that characterize amyotrophic lateral sclerosis (ALS) and the most common pathological subtype of frontotemporal lobar degeneration (FTLD-U). 67345-1-Ig is a mouse monoclonal antibody raised against the C-terminal region of human TDP-43.

## Stockage

**Stockage:**  
Stocker à -20 °C. Éviter toute exposition à la lumière.  
**Tampon de stockage:**  
PBS avec glycérol à 50 %, Proclin300 à 0,05 % et BSA à 0,5 %, pH 7,3.  
L'aliquotage n'est pas nécessaire pour le stockage à -20C

**\*\*\* Les 20ul contiennent 0,1% de BSA.**

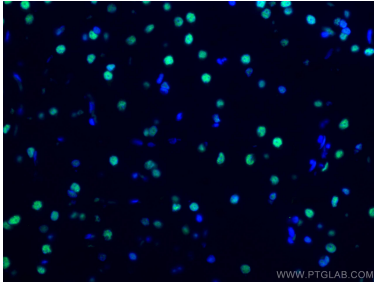
For technical support and original validation data for this product please contact:

T: 1 (888) 4PTGLAB (1-888-478-4522) (toll free  
in USA), or 1(312) 455-8498 (outside USA)

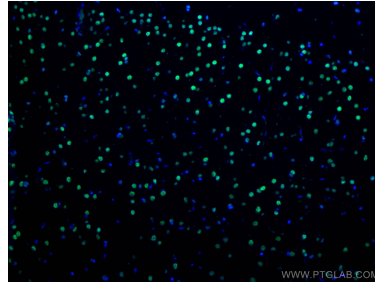
E: [proteintech@ptglab.com](mailto:proteintech@ptglab.com)  
W: [ptglab.com](http://ptglab.com)

**This product is exclusively available under Proteintech Group brand and is not available to purchase from any other manufacturer.**

## Données de validation sélectionnées



Immunofluorescent analysis of (4% PFA) fixed rat brain tissue using CoraLite® Plus 488-conjugated TDP-43 (C-terminal) antibody (CL488-67345, Clone: 1G5F6) at dilution of 1:300.



Immunofluorescent analysis of (4% PFA) fixed rat brain tissue using CoraLite® Plus 488-conjugated TDP-43 (C-terminal) antibody (CL488-67345, Clone: 1G5F6) at dilution of 1:300.