

À des fins de recherche uniquement

Anticorps Monoclonal anti-ERO1L

Numéro de catalogue: CL488-67416



Informations de base

Numéro de catalogue: CL488-67416	Numéro d'acquisition GenBank: BC008674	Méthode de purification: Purification par protéine A
Taille: 100ul , Concentration: 1000 µg/ml by Nanodrop;	Identification du gène (NCBI): 30001	CloneNo.: 1G12E11
Hôte: Mouse	Nom complet: ERO1-like (<i>S. cerevisiae</i>)	Dilutions recommandées: IF 1:200-1:800
Isotype: IgG2b	MW calculé: 468 aa, 54 kDa	Excitation/Emission maxima wavelengths: 493 nm / 522 nm
Immunogen Catalog Number: AG29910	MW observés: 54 kDa	

Applications

Applications testées:

IF

Spécificité de l'espèce:

Humain, rat, souris

Contrôles positifs:

IF : tissu de cancer de l'estomac humain,

Informations générales

ERO1L, also named as ERO1-alpha, is an essential oxidoreductase that oxidizes proteins in the endoplasmic reticulum to produce disulfide bonds. It acts by oxidizing directly P4HB/PDI isomerase through a direct disulfide exchange. It does not act as a direct oxidant of folding substrate, but relies on P4HB/PDI to transfer oxidizing equivalent. Associates with ERP44 but not with GRP54, demonstrating that it does not oxidize all PDI related proteins and can discriminate between PDI and related proteins. Its reoxidation probably involves electron transfer to molecular oxygen via FAD. Glutathione may be required to regulate its activity in the endoplasmic reticulum. It may be responsible for a significant proportion of reactive oxygen species (ROS) in the cell, thereby being a source of oxidative stress. It is required for the folding of immunoglobulin proteins. Responsible for the release of the unfolded cholera toxin from reduced P4HB/PDI in case of infection by *V.cholerae*, thereby playing a role in retrotranslocation of the toxin.

Stockage

Stockage:

Stocker à -20 °C. Éviter toute exposition à la lumière.

Tampon de stockage:

PBS avec glycérol à 50 %, Proclin300 à 0,05 % et BSA à 0,5 %, pH 7,3.

L'aliquotage n'est pas nécessaire pour le stockage à -20C

*** Les 20ul contiennent 0,1% de BSA.

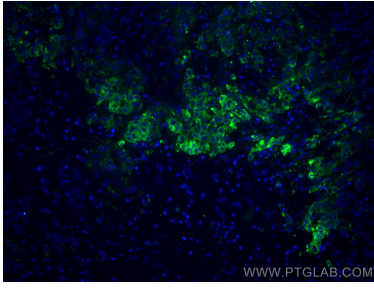
For technical support and original validation data for this product please contact:

T: 1 (888) 4PTGLAB (1-888-478-4522) (toll free
in USA), or 1(312) 455-8498 (outside USA)

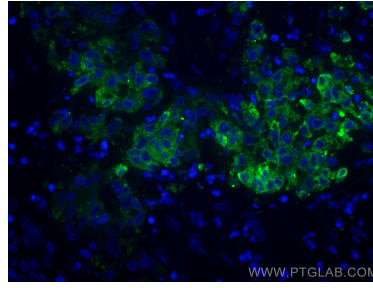
E: proteintech@ptglab.com
W: ptglab.com

This product is exclusively available under Proteintech Group brand and is not available to purchase from any other manufacturer.

Données de validation sélectionnées



Immunofluorescent analysis of (4% PFA) fixed human stomach cancer tissue using CoraLite® Plus 488 ERO1L antibody (CL488-67416, Clone: 1G12E11) at dilution of 1:200.



Immunofluorescent analysis of (4% PFA) fixed human stomach cancer tissue using CoraLite® Plus 488 ERO1L antibody (CL488-67416, Clone: 1G12E11) at dilution of 1:200.