

À des fins de recherche uniquement

# Anticorps Monoclonal anti-KLK11

Numéro de catalogue: **CL488-67427**



## Informations de base

Numéro de catalogue: CL488-67427	Numéro d'acquisition GenBank: BC022068	Méthode de purification: Purification par protéine G
Taille: 100ul , Concentration: 1000 µg/ml by Nanodrop;	Identification du gène (NCBI): 11012	CloneNo.: 1E2B4
Hôte: Mouse	Nom complet: kallikrein-related peptidase 11	Dilutions recommandées: IF 1:50-1:500
Isotype: IgG1	MW calculé 250 aa, 27 kDa	Excitation/Emission maxima wavelengths: 493 nm / 522 nm
Immunogen Catalog Number: AG29895	MW observés: 30-40 kDa	

## Applications

Applications testées: IF	Contrôles positifs: IF : tissu de cancer du sein humain,
Spécificité de l'espèce: Humain, porc, rat	

## Informations générales

KLK11(Kallikrein-11) is also named as PRSS20, TLSP and belongs to the peptidase S1 family and Kallikrein subfamily. It is a multifunctional protease cleaving several substrates for kallikrein and trypsin and involved in normal physiology processes in bronchus. This full length protein has a signal peptide, a propeptide and four glycosylation sites. It has 4 isoforms produced by alternative splicing with the molecular weight of 31 kDa, 27 kDa, 34 kDa and 30 kDa.

## Stockage

**Stockage:**  
Stocker à -20 °C. Éviter toute exposition à la lumière.  
**Tampon de stockage:**  
PBS avec glycérol à 50 %, Proclin300 à 0,05 % et BSA à 0,5 %, pH 7,3.  
L'aliquotage n'est pas nécessaire pour le stockage à -20C

**\*\*\* Les 20ul contiennent 0,1% de BSA.**

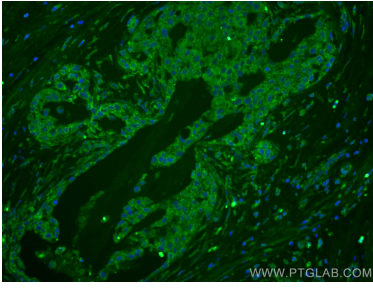
For technical support and original validation data for this product please contact:

T: 1 (888) 4PTGLAB (1-888-478-4522) (toll free  
in USA), or 1(312) 455-8498 (outside USA)

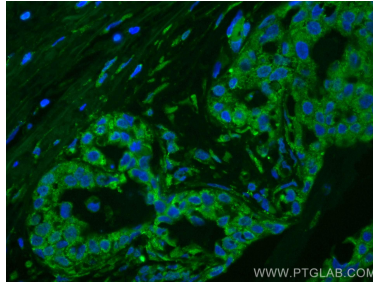
E: [proteintech@ptglab.com](mailto:proteintech@ptglab.com)  
W: [ptglab.com](http://ptglab.com)

**This product is exclusively available under Proteintech Group brand and is not available to purchase from any other manufacturer.**

## Données de validation sélectionnées



Immunofluorescent analysis of (4% PFA) fixed human breast cancer tissue using CoraLite® Plus 488 KLK11 antibody (CL488-67427, Clone: 1E2B4) at dilution of 1:200.



Immunofluorescent analysis of (4% PFA) fixed human breast cancer tissue using CoraLite® Plus 488 KLK11 antibody (CL488-67427, Clone: 1E2B4) at dilution of 1:200.