

À des fins de recherche uniquement

Anticorps Monoclonal anti-MTH1

Numéro de catalogue: **CL488-67443**



Informations de base

Numéro de catalogue: CL488-67443	Numéro d'acquisition GenBank: BC014618	Méthode de purification: Purification par protéine G
Taille: 100ul, Concentration: 1000 µg/ml by Nanodrop;	Identification du gène (NCBI): 4521	CloneNo.: 2D7G4
Hôte: Mouse	Nom complet: nudix (nucleoside diphosphate linked moiety X)-type motif 1	Dilutions recommandées: Excitation/Emission maxima wavelengths: 493 nm / 522 nm
Isotype: IgG1	MW calculé 179aa,20 kDa; 197aa,23 kDa	
Immunogen Catalog Number: AG9802	MW observés: 19 kDa	

Applications

Applications testées: FC (Intra), IF	Contrôles positifs: IF : cellules HepG2,
Spécificité de l'espèce: Humain	

Informations générales

MTH1, also known as NUDT1 or 8-Oxo-dGTPase, is an important repair enzyme that prevents oxidative stress-induced DNA damage through hydrolyzing mutagenic 8-oxo-dGTP into 8-oxo-dGMP. MTH1 is expressed in postmitotic neurons as well as in proliferative tissues, and it is localized both in the mitochondria and nucleus. MTH1 might be a useful marker of oxidative stress and its level increased upon oxidative stress. Increased expression of MTH1 were also found in various cancer tissues and neurodegenerative diseases.

Stockage

Stockage:
Stocker à -20 °C. Éviter toute exposition à la lumière. Stable pendant un an après l'expédition.
Tampon de stockage:
PBS avec glycérol à 50 %, Proclin300 à 0,05 % et BSA à 0,5 %, pH 7,3.
L'aliquotage n'est pas nécessaire pour le stockage à -20C

***** Les 20ul contiennent 0,1% de BSA.**

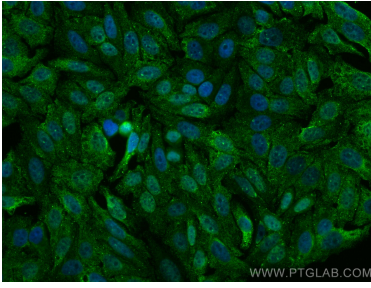
For technical support and original validation data for this product please contact:

T: 1 (888) 4PTGLAB (1-888-478-4522) (toll free
in USA), or 1(312) 455-8498 (outside USA)

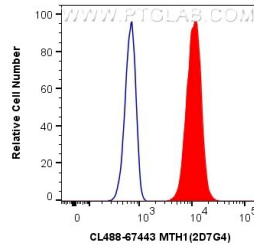
E: proteintech@ptglab.com
W: ptglab.com

This product is exclusively available under Proteintech Group brand and is not available to purchase from any other manufacturer.

Données de validation sélectionnées



Immunofluorescent analysis of (4% PFA) fixed HepG2 cells using Coralite® Plus 488 MTH1 antibody (CL488-67443, Clone: 2D7G4) at dilution of 1:200.



1X10⁶ Jurkat cells were intracellularly stained with 0.4 ug Coralite® Plus 488 Anti-Human MTH1 (CL488-67443, Clone:2D7G4) (red), or 0.4 ug Control Antibody. Cells were fixed and permeabilized with Transcription Factor Staining Buffer Kit (PF00011).