

À des fins de recherche uniquement

Anticorps Monoclonal anti-MTMR14

Numéro de catalogue: CL488-67561



Informations de base

Numéro de catalogue: CL488-67561	Numéro d'acquisition GenBank: BC050626	Méthode de purification: Purification par protéine A
Taille: 100ul , Concentration: 1000 µg/ml by Nanodrop;	Identification du gène (NCBI): 64419	CloneNo.: 1A8B2
Hôte: Mouse	Nom complet: myotubularin related protein 14	Dilutions recommandées: IF 1:50-1:500
Isotype: IgG2b	MW calculé 72 kDa	Excitation/Emission maxima wavelengths: 493 nm / 522 nm
Immunogen Catalog Number: AG6883	MW observés: 74 kDa	

Applications

Applications testées: IF	Contrôles positifs: IF : tissu de muscle squelettique de souris,
Spécificité de l'espèce: Humain, rat, souris	

Informations générales

MTMR14, also known as Jumpy, belongs to the MTM1/MTMRs family which has 15 members that divided into two subgroup: catalytically inactive and active. MTMR14 is a catalytically active member possessing an active phosphatase domain, that specifically dephosphorylates PI3P and phosphatidylinositol (3,5)-bisphosphate (PI3,5P2) at position 3 on inositol ring. A remarkable feature of the MTM1/MTMRs family is the association between a catalytically inactive member and a catalytically active member, which plays an important regulatory role. MTMR14 has 3 isoforms with molecular weight of 60-72 kDa, and also can be detected as a higher molecular weight due to the heterodimerization with other MTMR members.

Stockage

Stockage:
Stocker à -20 °C. Éviter toute exposition à la lumière.
Tampon de stockage:
PBS avec glycérol à 50 %, Proclin300 à 0,05 % et BSA à 0,5 %, pH 7,3.
L'aliquotage n'est pas nécessaire pour le stockage à -20C

***** Les 20ul contiennent 0,1% de BSA.**

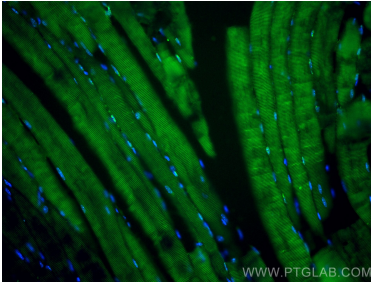
For technical support and original validation data for this product please contact:

T: 1 (888) 4PTGLAB (1-888-478-4522) (toll free
in USA), or 1(312) 455-8498 (outside USA)

E: proteintech@ptglab.com
W: ptglab.com

This product is exclusively available under Proteintech Group brand and is not available to purchase from any other manufacturer.

Données de validation sélectionnées



Immunofluorescent analysis of (4% PFA) fixed mouse skeletal muscle tissue using Coralite® Plus 488 MTMR14 antibody (CL488-67561, Clone: 1A8B2) at dilution of 1:200.