

À des fins de recherche uniquement

Anticorps Monoclonal anti-NXT1

Numéro de catalogue: CL488-67680



Informations de base

Numéro de catalogue: CL488-67680	Numéro d'acquisition GenBank: BC000759	Méthode de purification: Purification par protéine A
Taille: 100ul, Concentration: 1000 µg/ml by Nanodrop;	Identification du gène (NCBI): 29107	CloneNo.: 2C10A2
Hôte: Mouse	Nom complet: NTF2-like export factor 1	Excitation/Emission maxima wavelengths: 493 nm / 522 nm
Isotype: IgG2a	MW calculé 15 kDa	
Immunogen Catalog Number: AG30039	MW observés: 15 kDa	

Applications

Applications testées:
FC (Intra)

Spécificité de l'espèce:
Humain, rat, souris

Informations générales

NXT1 is located in the nuclear envelope and is homologous to nuclear transport factor 2. NXT1 functions as a nuclear export factor in both RAN (Ras-related nuclear protein)- and CRM1 (required for chromosome region maintenance)-dependent pathways. It is found to stimulate the export of U1 snRNA in RAN- and CRM1-dependent pathways and the export of tRNA and mRNA in a CRM1-independent pathway. NXT1 also heterodimerizes with Tap protein and regulates the ability of Tap protein to mediate nuclear mRNA export.

Stockage

Stockage:
Stocker à -20 °C. Éviter toute exposition à la lumière. Stable pendant un an après l'expédition.

Tampon de stockage:
PBS avec glycérol à 50 %, Proclin300 à 0,05 % et BSA à 0,5 %, pH 7,3.
L'aliquotage n'est pas nécessaire pour le stockage à -20C

***** Les 20ul contiennent 0,1% de BSA.**

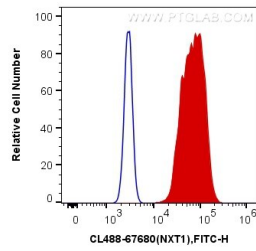
For technical support and original validation data for this product please contact:

T: 1 (888) 4PTGLAB (1-888-478-4522) (toll free
in USA), or 1(312) 455-8498 (outside USA)

E: proteintech@ptglab.com
W: ptglab.com

This product is exclusively available under Proteintech Group brand and is not available to purchase from any other manufacturer.

Données de validation sélectionnées



1X10⁶ HeLa cells were intracellularly stained with 0.4 ug Coralite® Plus 488 Anti-Human NXT1 (CL488-67680, Clone:2C10A2) (red), or 0.4 ug Mouse IgG2a Isotype Control (CL488-66360-2, Clone: K11A1B2A2) (blue). Cells were fixed with 4% PFA and permeabilized with Flow Cytometry Perm Buffer (PF00011-C).