

À des fins de recherche uniquement

Anticorps Monoclonal anti-GATA2

Numéro de catalogue: CL488-67722



Informations de base

Numéro de catalogue: CL488-67722	Numéro d'acquisition GenBank: BC018988	Méthode de purification: Purification par protéine G
Taille: 100ul, Concentration: 1000 µg/ml by Nanodrop;	Identification du gène (NCBI): 2624	CloneNo.: 2B5A1
Hôte: Mouse	Nom complet: GATA binding protein 2	Excitation/Emission maxima wavelengths: 493 nm / 522 nm
Isotype: IgG1	MW observés: 50 kDa	
Immunogen Catalog Number: AG1557		

Applications

Applications testées:
FC (Intra)
Spécificité de l'espèce:
Humain, souris

Informations générales

GATA2 is a member of GATA family of transcription factors that contains zinc fingers in DNA binding domain. GATA2 acts as a transcriptional activator that regulates endothelin-1 expression in endothelial cells. Together with GATA3, GATA2 regulates adipocyte differentiation through molecular control of the preadipocyte-adipocyte transition. It also affect the activity of Rho inhibitor p190RhoGAP that controls capillary network formation in vitro and retinal angiogenesis in vivo.

Stockage

Stockage:
Stocker à -20 °C. Éviter toute exposition à la lumière.
Tampon de stockage:
PBS avec glycérol à 50 %, Proclin300 à 0,05 % et BSA à 0,5 %, pH 7,3.
L'aliquotage n'est pas nécessaire pour le stockage à -20C

***** Les 20ul contiennent 0,1% de BSA.**

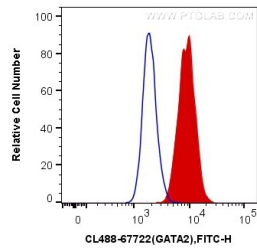
For technical support and original validation data for this product please contact:

T: 1 (888) 4PTGLAB (1-888-478-4522) (toll free
in USA), or 1(312) 455-8498 (outside USA)

E: proteintech@ptglab.com
W: ptglab.com

This product is exclusively available under Proteintech Group brand and is not available to purchase from any other manufacturer.

Données de validation sélectionnées



1X10⁶ K-562 cells were intracellularly stained with 0.4 ug CoraLite® Plus 488 Anti-Human GATA2 (CL488-67722, Clone:2B5A1) (red), or 0.4 ug Control Antibody. Cells were fixed and permeabilized with Transcription Factor Staining Buffer Kit (PF00011).