

À des fins de recherche uniquement

# Anticorps Monoclonal anti-PTGES3

Numéro de catalogue: CL488-67736



## Informations de base

Numéro de catalogue: CL488-67736	Numéro d'acquisition GenBank: BC003005	Méthode de purification: Purification par protéine G
Taille: 100ul , Concentration: 1000 µg/ml by Nanodrop;	Identification du gène (NCBI): 10728	CloneNo.: 3C11D11
Hôte: Mouse	Nom complet: prostaglandin E synthase 3 (cytosolic)	Dilutions recommandées: IF 1:50-1:500
Isotype: IgG1	MW calculé 19 kDa	Excitation/Emission maxima wavelengths: 493 nm / 522 nm
Immunogen Catalog Number: AG7870	MW observés: 22 kDa	

## Applications

Applications testées: FC (Intra), IF	Contrôles positifs: IF : cellules HepG2,
Spécificité de l'espèce: Humain, porc, rat, souris	

## Informations générales

P23, encoded by the gene PTGES3, plays a key role in glucocorticoid signaling and was increased at the mRNA level in the DLPFC in individuals with schizophrenia (PMID: 24345775). In the GR heterocomplex in vitro, p23 is an obligatory co-factor<sup>19</sup> and is the limiting component of the complex<sup>44</sup>, functioning to stabilize the interaction of the complex with GR in the cytoplasm. Paradoxically, p23 also acts in the nucleus to inhibit GR-mediated gene transcription and disassemble GR transcriptional machinery in the nucleus (PMID: 12077419). In vivo, p23 is critical for appropriate glucocorticoid responsiveness (PMID: 17000766).

## Stockage

Stockage:  
Stocker à -20 °C. Éviter toute exposition à la lumière.  
Tampon de stockage:  
PBS avec glycérol à 50 %, Proclin300 à 0,05 % et BSA à 0,5 %, pH 7,3.  
L'aliquotage n'est pas nécessaire pour le stockage à -20C

\*\*\* Les 20ul contiennent 0,1% de BSA.

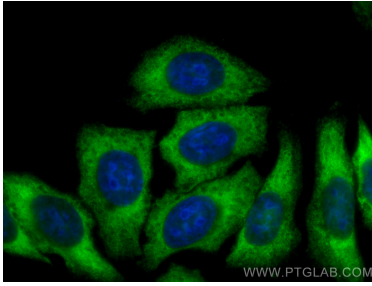
For technical support and original validation data for this product please contact:

T: 1 (888) 4PTGLAB (1-888-478-4522) (toll free  
in USA), or 1(312) 455-8498 (outside USA)

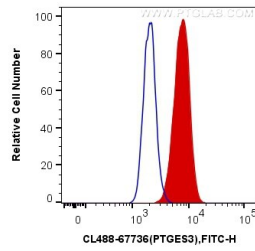
E: proteintech@ptglab.com  
W: ptglab.com

This product is exclusively available under Proteintech Group brand and is not available to purchase from any other manufacturer.

## Données de validation sélectionnées



Immunofluorescent analysis of (-20°C Ethanol) fixed HepG2 cells using CoraLite® Plus 488 PTGES3 antibody (CL488-67736, Clone: 3C11D11) at dilution of 1:200.



1X10<sup>6</sup> HepG2 cells were intracellularly stained with 0.4 ug CoraLite® Plus 488 Anti-Human PTGES3 (CL488-67736, Clone:3C11D11) (red), or 0.4 ug Mouse IgG1 Isotype Control (CL488-66360, Clone: T1F8D3F10) (blue). Cells were fixed with 4% PFA and permeabilized with Flow Cytometry Perm Buffer (PF00011-C).