

À des fins de recherche uniquement

Anticorps Monoclonal anti-RUVBL1

Numéro de catalogue: CL488-67750



Informations de base

Numéro de catalogue: CL488-67750	Numéro d'acquisition GenBank: BC002993	Méthode de purification: Purification par protéine G
Taille: 100ul , Concentration: 1000 µg/ml by Nanodrop;	Identification du gène (NCBI): 8607	CloneNo.: 1F2D9
Hôte: Mouse	Nom complet: RuvB-like 1 (E. coli)	Dilutions recommandées: IF 1:50-1:500
Isotype: IgG1	MW calculé: 456 aa, 50 kDa	Excitation/Emission maxima wavelengths: 493 nm / 522 nm
Immunogen Catalog Number: AG16688	MW observés: 50 kDa	

Applications

Applications testées: FC (Intra), IF	Contrôles positifs: IF : cellules LNCaP,
Spécificité de l'espèce: Humain, rat	

Informations générales

RUVBL1 is a member of the AAA (ATPase associated with diverse cellular activities) family of proteins that is associated with several chromatin-remodelling complexes and has important roles in transcriptional regulation, the DNA damage response, telomerase activity, snoRNP assembly, cellular transformation and cancer metastasis[PMID: 21617703]. It consists of 456 amino acids (50 kDa) and interacts with TATA-binding protein (TBP), which is a central component for transcriptional regulation by forming complexes with various transcription regulators. RUVBL1 is a component of a large nuclear protein complex, possibly the RNA polymerase II holoenzyme. RUVBL1 is also highly homologous to RuvB proteins that function as a DNA helicase promote branch migration of the Holliday junction[PMID: 9588198].

Stockage

Stockage:
Stocker à -20 °C. Éviter toute exposition à la lumière. Stable pendant un an après l'expédition.
Tampon de stockage:
PBS avec glycérol à 50 %, Proclin300 à 0,05 % et BSA à 0,5 %, pH 7,3.
L'aliquotage n'est pas nécessaire pour le stockage à -20C

***** Les 20ul contiennent 0,1% de BSA.**

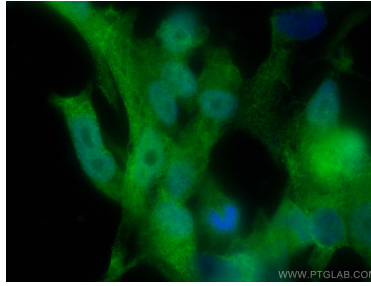
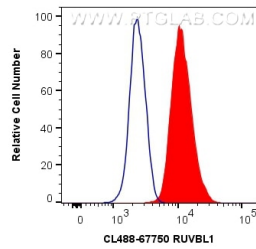
For technical support and original validation data for this product please contact:

T: 1 (888) 4PTGLAB (1-888-478-4522) (toll free
in USA), or 1(312) 455-8498 (outside USA)

E: proteintech@ptglab.com
W: ptglab.com

This product is exclusively available under Proteintech Group brand and is not available to purchase from any other manufacturer.

Données de validation sélectionnées



1X10⁶ HEK-293 cells were intracellularly stained with 0.4 ug CoraLite® Plus 488 Anti-Human RUVBL1 (CL488-67750, Clone:1F2D9) (red), or 0.4 ug Control Antibody. Cells were fixed with 4% PFA and permeabilized with Flow Cytometry Perm Buffer (PF00011-C).

Immunofluorescent analysis of (4% PFA) fixed LNCaP cells using CoraLite® Plus 488 RUVBL1 antibody (CL488-67750, Clone: 1F2D9) at dilution of 1:200.