

À des fins de recherche uniquement

Anticorps Monoclonal anti-EED

Numéro de catalogue: CL488-67756



Informations de base

Numéro de catalogue: CL488-67756	Numéro d'acquisition GenBank: BC068995	Méthode de purification: Purification par protéine A
Taille: 100ul , Concentration: 1000 µg/ml by Nanodrop;	Identification du gène (NCBI): 8726	CloneNo.: 1D11D4
Hôte: Mouse	Nom complet: embryonic ectoderm development	Dilutions recommandées: IF 1:50-1:500
Isotype: IgG2b	MW calculé 466 aa, 53 kDa	Excitation/Emission maxima wavelengths: 493 nm / 522 nm
Immunogen Catalog Number: AG10369		

Applications

Applications testées: FC (Intra), IF	Contrôles positifs: IF : tissu testiculaire de souris,
Spécificité de l'espèce: Humain, souris	

Informations générales

EED is a member of the Polycomb-group (PcG) family. PcG family members form multimeric protein complexes, which are involved in maintaining the transcriptional repressive state of genes over successive cell generations. This protein interacts with enhancer of zeste 2, the cytoplasmic tail of integrin beta7, immunodeficiency virus type 1 (HIV-1) MA protein, and histone deacetylase proteins. This protein mediates repression of gene activity through histone deacetylation, and may act as a specific regulator of integrin function. EED has three isoforms, with the molecular weight of isoforms 1/2/3: 50/53/46 kDa.

Stockage

Stockage:
Stocker à -20 °C. Éviter toute exposition à la lumière. Stable pendant un an après l'expédition.
Tampon de stockage:
PBS avec glycérol à 50 %, Proclin300 à 0,05 % et BSA à 0,5 %, pH 7,3.
L'aliquotage n'est pas nécessaire pour le stockage à -20C

***** Les 20ul contiennent 0,1% de BSA.**

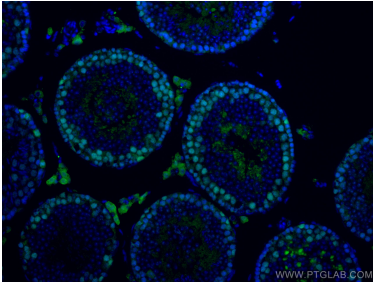
For technical support and original validation data for this product please contact:

T: 1 (888) 4PTGLAB (1-888-478-4522) (toll free
in USA), or 1(312) 455-8498 (outside USA)

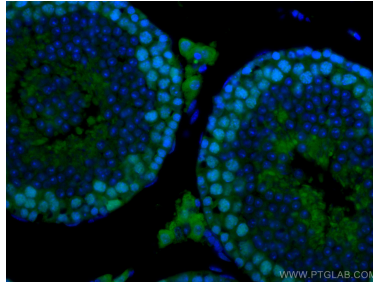
E: proteintech@ptglab.com
W: ptglab.com

This product is exclusively available under Proteintech Group brand and is not available to purchase from any other manufacturer.

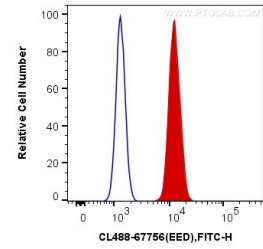
Données de validation sélectionnées



Immunofluorescent analysis of (4% PFA) fixed mouse testis tissue using CoraLite® Plus 488 EED antibody (CL488-67756, Clone: 1D11D4) at dilution of 1:200.



Immunofluorescent analysis of (4% PFA) fixed mouse testis tissue using CoraLite® Plus 488 EED antibody (CL488-67756, Clone: 1D11D4) at dilution of 1:200.



1X10⁶ HeLa cells were intracellularly stained with 0.2 ug CoraLite® Plus 488 Anti-Human EED (CL488-67756, Clone:1D11D4) (red), or 0.2 ug Mouse IgG2b Isotype Control (CL488-66360-3, Clone: K11B8C4B5) (blue). Cells were fixed and permeabilized with Transcription Factor Staining Buffer Kit (PF00011).