

À des fins de recherche uniquement

Anticorps Monoclonal anti-LMCD1

Numéro de catalogue: **CL488-67834**



Informations de base

Numéro de catalogue: CL488-67834	Numéro d'acquisition GenBank: BC000646	Méthode de purification: Purification par protéine G
Taille: 100ul, Concentration: 1000 µg/ml by Nanodrop;	Identification du gène (NCBI): 29995	CloneNo.: 2A7B3
Hôte: Mouse	Nom complet: LIM and cysteine-rich domains 1	Dilutions recommandées: IF 1:50-1:500
Isotype: IgG1	MW calculé 41 kDa	Excitation/Emission maxima wavelengths: 493 nm / 522 nm
Immunogen Catalog Number: AG28331	MW observés: ~40 kDa	

Applications

Applications testées: FC (Intra), IF	Contrôles positifs: IF : cellules MCF-7,
Spécificité de l'espèce: Humain	

Informations générales

LIM and cysteine-rich domains-1 (LMCD1) is a member of the LIM protein family, which contains an N-terminal cysteine-rich region, two C-terminal LIM domains and a central PET (Prickle, Espinas, and Testin) domain. LMCD1 has been reported in cardiac tissues and lung acting as a transcriptional repressor for GATA6. The mutations of LMCD1 promote cell migration and tumor metastasis in hepatocellular carcinoma. (PMID: 31501411) It has calculated molecular weight around 41kDa.

Stockage

Stockage:
Stocker à -20 °C. Éviter toute exposition à la lumière. Stable pendant un an après l'expédition.
Tampon de stockage:
PBS avec glycérol à 50 %, Proclin300 à 0,05 % et BSA à 0,5 %, pH 7,3.
L'aliquotage n'est pas nécessaire pour le stockage à -20C

***** Les 20ul contiennent 0,1% de BSA.**

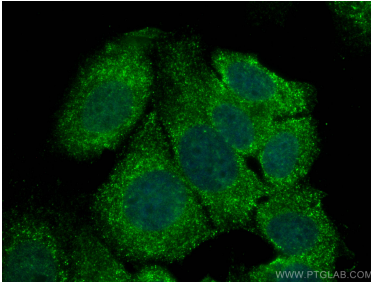
For technical support and original validation data for this product please contact:

T: 1 (888) 4PTGLAB (1-888-478-4522) (toll free
in USA), or 1(312) 455-8498 (outside USA)

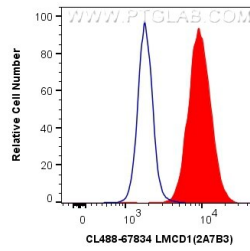
E: proteintech@ptglab.com
W: ptglab.com

This product is exclusively available under Proteintech Group brand and is not available to purchase from any other manufacturer.

Données de validation sélectionnées



Immunofluorescent analysis of (4% PFA) fixed MCF-7 cells using CoraLite® Plus 488 LMCD1 antibody (CL488-67834, Clone: 2A7B3) at dilution of 1:200.



1X10⁶ MCF-7 cells were intracellularly stained with 0.8 ug CoraLite® Plus 488 Anti-Human LMCD1 (CL488-67834, Clone:2A7B3) (red), or 0.8 ug CoraLite® Plus 488 Mouse IgG1 Isotype Control (MOPC-21) (CL488-65124, Clone: MOPC-21) (blue). Cells were fixed and permeabilized with Transcription Factor Staining Buffer Kit (PF00011).