

À des fins de recherche uniquement

Anticorps Monoclonal anti-RCHY1

Numéro de catalogue: CL488-67856



Informations de base

Numéro de catalogue: CL488-67856	Numéro d'acquisition GenBank: BC047393	Méthode de purification: Purification par protéine A
Taille: 100ul, Concentration: 1000 µg/ml by Nanodrop;	Identification du gène (NCBI): 25898	CloneNo.: 2C11C11
Hôte: Mouse	Nom complet: ring finger and CHY zinc finger domain containing 1	Dilutions recommandées: IF 1:50-1:500
Isotype: IgG2a	MW calculé 261 aa, 30 kDa	Excitation/Emission maxima wavelengths: 493 nm / 522 nm
Immunogen Catalog Number: AG4942		

Applications

Applications testées: FC (Intra), IF	Contrôles positifs: IF : cellules A549, cellules HeLa
Spécificité de l'espèce: Humain	

Informations générales

Pirh2 is also named as RCHY1, ARNIP, CHIMP, PIRH2, RNF199, ZNF363 and has p53-induced ubiquitin-protein ligase activity, promoting p53 degradation. Pirh2 monoubiquitinates the translesion DNA polymerase POLH and contributes to the regulation of the cell cycle progression. This protein has 8 isoforms produced by alternative splicing and can exist as a monomer or homodimer.

Stockage

Stockage:
Stocker à -20 °C. Éviter toute exposition à la lumière. Stable pendant un an après l'expédition.
Tampon de stockage:
PBS avec glycérol à 50 %, Proclin300 à 0,05 % et BSA à 0,5 %, pH 7,3.
L'aliquotage n'est pas nécessaire pour le stockage à -20C

***** Les 20ul contiennent 0,1% de BSA.**

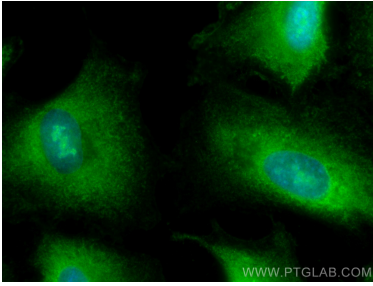
For technical support and original validation data for this product please contact:

T: 1 (888) 4PTGLAB (1-888-478-4522) (toll free
in USA), or 1(312) 455-8498 (outside USA)

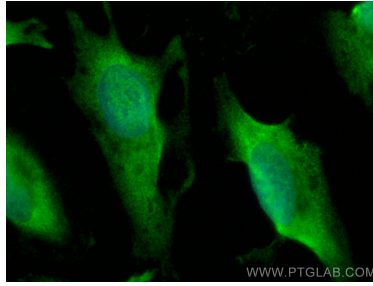
E: proteintech@ptglab.com
W: ptglab.com

This product is exclusively available under Proteintech Group brand and is not available to purchase from any other manufacturer.

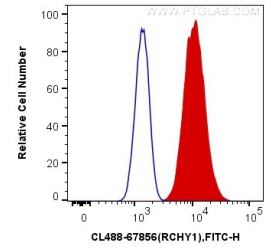
Données de validation sélectionnées



Immunofluorescent analysis of (-20°C Methanol) fixed A549 cells using CoraLite® Plus 488 RCHY1 antibody (CL488-67856, Clone: 2C11C11) at dilution of 1:200.



Immunofluorescent analysis of (-20°C Methanol) fixed HeLa cells using CoraLite® Plus 488 RCHY1 antibody (CL488-67856, Clone: 2C11C11) at dilution of 1:200.



1X10⁶ PC-12 cells were intracellularly stained with 0.4 ug CoraLite® Plus 488 Anti-Human RCHY1 (CL488-67856, Clone:2C11C11) (red), or 0.4 ug Mouse IgG2a Isotype Control (CL488-66360-2, Clone: K11A1B2A2) (blue). Cells were fixed with 4% PFA and permeabilized with Flow Cytometry Perm Buffer (PF00011-C).