

À des fins de recherche uniquement

# Anticorps Monoclonal anti-Synaptophysin



Numéro de catalogue: **CL488-67864**

## Informations de base

Numéro de catalogue: CL488-67864	Numéro d'acquisition GenBank: BC064550	Méthode de purification: Purification par protéine G
Taille: 100ul , Concentration: 1000 µg/ml by Nanodrop;	Identification du gène (NCBI): 6855	CloneNo.: 4E12C4
Hôte: Mouse	Nom complet: synaptophysin	Dilutions recommandées: IF 1:50-1:500
Isotype: IgG1	MW calculé 313 aa, 34 kDa	Excitation/Emission maxima wavelengths: 493 nm / 522 nm
Immunogen Catalog Number: AG11803		

## Applications

Applications testées: FC (Intra), IF	Contrôles positifs: IF : tissu cérébral de souris,
Spécificité de l'espèce: Humain, porc, rat, souris	

## Informations générales

Synaptophysin (SYP, also known as major synaptic vesicle protein p38) is a 38-kDa integral membrane glycoprotein that regulates synaptic vesicle endocytosis. It is the most abundant synaptic vesicle protein by mass. Synaptophysin is present in neuroendocrine cells and neurons that participate in synaptic transmission. Synaptophysin is a useful marker for identification of neuroendocrine cells and neoplasms. (PMID: 3010302; 21658579)

## Stockage

**Stockage:**  
Stocker à -20 °C. Éviter toute exposition à la lumière. Stable pendant un an après l'expédition.  
**Tampon de stockage:**  
PBS avec glycérol à 50 %, Proclin300 à 0,05 % et BSA à 0,5 %, pH 7,3.  
L'aliquotage n'est pas nécessaire pour le stockage à -20C

**\*\*\* Les 20ul contiennent 0,1% de BSA.**

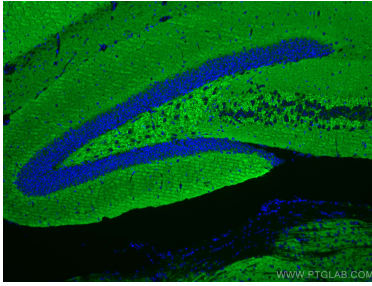
For technical support and original validation data for this product please contact:

T: 1 (888) 4PTGLAB (1-888-478-4522) (toll free  
in USA), or 1(312) 455-8498 (outside USA)

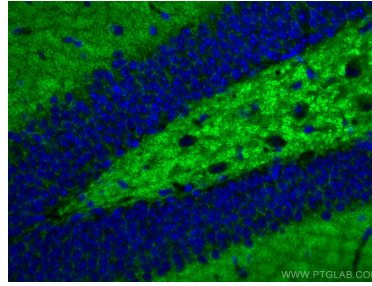
E: [proteintech@ptglab.com](mailto:proteintech@ptglab.com)  
W: [ptglab.com](http://ptglab.com)

**This product is exclusively available under Proteintech Group brand and is not available to purchase from any other manufacturer.**

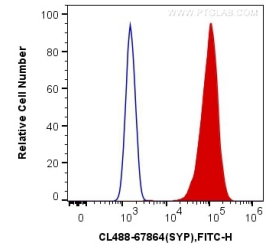
## Données de validation sélectionnées



Immunofluorescent analysis of (4% PFA) fixed mouse brain tissue using CoraLite® Plus 488 Synaptophysin antibody (CL488-67864, Clone: 4E12C4 ) at dilution of 1:200.



Immunofluorescent analysis of (4% PFA) fixed mouse brain tissue using CoraLite® Plus 488 Synaptophysin antibody (CL488-67864, Clone: 4E12C4 ) at dilution of 1:200.



1X10<sup>6</sup> PC-12 cells were intracellularly stained with 0.4 ug CoraLite® Plus 488 Anti-Human Synaptophysin (CL488-67864, Clone:4E12C4) (red), or 0.4 ug Mouse IgG1 Isotype Control (CL488-66360, Clone: T1F8D3F10) (blue). Cells were fixed with 4% PFA and permeabilized with Flow Cytometry Perm Buffer (PF00011-C).