

À des fins de recherche uniquement

Anticorps Monoclonal anti-SETD1A

Numéro de catalogue: CL488-67936



Informations de base

Numéro de catalogue: CL488-67936	Numéro d'acquisition GenBank: NM_014712	Méthode de purification: Purification par protéine G
Taille: 100ul , Concentration: 1000 µg/ml by Nanodrop;	Identification du gène (NCBI): 9739	CloneNo.: 1C2G12
Hôte: Mouse	Nom complet: SET domain containing 1A	Excitation/Emission maxima wavelengths: 493 nm / 522 nm
Isotype: IgG1	MW calculé: 186 kDa	
Immunogen Catalog Number: AG30424	MW observés: 270 kDa	

Applications

Applications testées:
FC (Intra)
Spécificité de l'espèce:
Humain, rat, souris

Informations générales

SETD1A is a SET domain-containing methyltransferase involved in the epigenetic regulation of transcription (PMID:12670868). It is the main catalytic component of a multiprotein complex that methylates lysine 4 of histone H3, a histone mark associated with gene activation (PMID:29937342). Responsible for H3K4me3 enriched promoters and transcriptional programming of inner mass stem cells and neuron progenitors during embryogenesis (PMID:31197650). Does not methylate 'Lys-4' of histone H3 if the neighboring 'Lys-9' residue is already methylated (PubMed:12670868). SETD1A has a calculated molecular weight of 186 kDa, and a 258 kDa band was also reported (PMID: 31076518).

Stockage

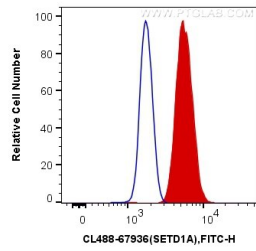
Stockage:
Stocker à -20 °C. Éviter toute exposition à la lumière. Stable pendant un an après l'expédition.
Tampon de stockage:
PBS avec glycérol à 50 %, Proclin300 à 0,05 % et BSA à 0,5 %, pH 7,3.
L'aliquotage n'est pas nécessaire pour le stockage à -20C

***** Les 20ul contiennent 0,1% de BSA.**

For technical support and original validation data for this product please contact:
T: 1 (888) 4PTGLAB (1-888-478-4522) (toll free in USA), or 1(312) 455-8498 (outside USA)
E: proteintech@ptglab.com
W: ptglab.com

This product is exclusively available under Proteintech Group brand and is not available to purchase from any other manufacturer.

Données de validation sélectionnées



1X10⁶ HEK-293 cells were intracellularly stained with 0.4 ug CoraLite® Plus 488 Anti-Human SETD1A (CL488-67936, Clone:1C2G12) (red), or 0.4 ug Control Antibody. Cells were fixed and permeabilized with Transcription Factor Staining Buffer Kit (PF00011).