

À des fins de recherche uniquement

Anticorps Monoclonal anti-CCT6B

Numéro de catalogue: CL488-67961



Informations de base

Numéro de catalogue: CL488-67961	Numéro d'acquisition GenBank: BC027591	Méthode de purification: Purification par protéine G
Taille: 100ul, Concentration: 1000 µg/ml by Nanodrop;	Identification du gène (NCBI): 10693	CloneNo.: 2F11A9
Hôte: Mouse	Nom complet: chaperonin containing TCP1, subunit 6B (zeta 2)	Excitation/Emission maxima wavelengths: 493 nm / 522 nm
Isotype: IgG1	MW calculé 530 aa, 58 kDa	
Immunogen Catalog Number: AG31295	MW observés: 53-58 kDa	

Applications

Applications testées:
FC (Intra)

Spécificité de l'espèce:
Humain, rat, souris

Informations générales

CCT6B, also named as CCT-zeta-2, TCP-1-zeta-like, CCT-zeta-like, Testis-specific Tcp20 and Testis-specific protein TSA303, belongs to the TCP-1 chaperonin family. CCT6B is a molecular chaperone which assists the folding of proteins upon ATP hydrolysis. It is known to play a role, in vitro, in the folding of actin and tubulin. CCT6B has 3 isoforms with the molecular mass of 53-58 kDa.

Stockage

Stockage:
Stocker à -20 °C. Éviter toute exposition à la lumière. Stable pendant un an après l'expédition.

Tampon de stockage:
PBS avec glycérol à 50 %, Proclin300 à 0,05 % et BSA à 0,5 %, pH 7,3.

L'aliquotage n'est pas nécessaire pour le stockage à -20C

*** Les 20ul contiennent 0,1% de BSA.

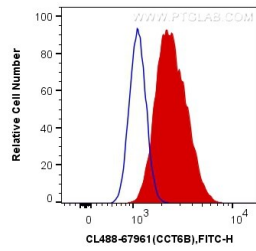
For technical support and original validation data for this product please contact:

T: 1 (888) 4PTGLAB (1-888-478-4522) (toll free
in USA), or 1(312) 455-8498 (outside USA)

E: proteintech@ptglab.com
W: ptglab.com

This product is exclusively available under Proteintech Group brand and is not available to purchase from any other manufacturer.

Données de validation sélectionnées



1X10⁶ U2OS cells were intracellularly stained with 0.4 ug CoraLite® Plus 488 Anti-Human CCT6B (CL488-67961, Clone:2F11A9) (red), or 0.4 ug Control Antibody. Cells were fixed with 4% PFA and permeabilized with Flow Cytometry Perm Buffer (PF00011-C).