

À des fins de recherche uniquement

Anticorps Monoclonal anti- ARHGEF16



Numéro de catalogue: **CL488-67975**

Informations de base

Numéro de catalogue: CL488-67975	Numéro d'acquisition GenBank: BC002681	Méthode de purification: Purification par protéine A
Taille: 100ul, Concentration: 1000 µg/ml by Nanodrop;	Identification du gène (NCBI): 27237	CloneNo.: 1D8E3
Hôte: Mouse	Nom complet: Rho guanine exchange factor (GEF) 161F	Dilutions recommandées: 1:50-1:500
Isotype: IgG2b	MW calculé 80 kDa	Excitation/Emission maxima wavelengths: 493 nm / 522 nm
Immunogen Catalog Number: AG28675	MW observés: 80 kDa	

Applications

Applications testées: FC (Intra), IF	Contrôles positifs: IF : cellules MCF-7,
Spécificité de l'espèce: Humain	

Informations générales

Small GTPases of the Rho family are critical regulators of various cellular functions including actin cytoskeleton organization, activation of kinase cascades, mitogenesis, transcriptional activation and stimulation of DNA synthesis. Rho proteins cycle between a biologically active GTP-bound state and an inactive GDP-bound state. Rho guanine nucleotide exchange factor (GEF) has a crucial role in activating small GTPase by exchange GDP for GTP. ARGEF16 is one of the multiple GEF members. Although the specific function of this protein is not known yet, it is thought to be involved in protein-protein and protein-lipid interactions.

Stockage

Stockage:
Stocker à -20 °C. Éviter toute exposition à la lumière. Stable pendant un an après l'expédition.
Tampon de stockage:
PBS avec glycérol à 50 %, Proclin300 à 0,05 % et BSA à 0,5 %, pH 7,3.
L'aliquotage n'est pas nécessaire pour le stockage à -20C

***** Les 20ul contiennent 0,1% de BSA.**

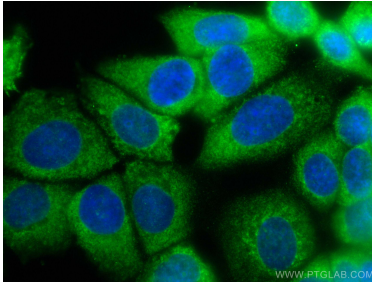
For technical support and original validation data for this product please contact:

T: 1 (888) 4PTGLAB (1-888-478-4522) (toll free
in USA), or 1(312) 455-8498 (outside USA)

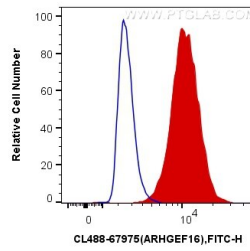
E: proteintech@ptglab.com
W: ptglab.com

This product is exclusively available under Proteintech Group brand and is not available to purchase from any other manufacturer.

Données de validation sélectionnées



Immunofluorescent analysis of (-20°C Methanol) fixed MCF-7 cells using CoraLite® Plus 488 ARHGEF16 antibody (CL488-67975, Clone: 1D8E3) at dilution of 1:200.



1X10⁶ MCF-7 cells were intracellularly stained with 0.4 ug CoraLite® Plus 488 Anti-Human ARHGEF16 (CL488-67975, Clone:1D8E3) (red), or 0.4 ug Mouse IgG2b Isotype Control (CL488-66360-3, Clone: K11B8C4B5) (blue). Cells were fixed with 4% PFA and permeabilized with Flow Cytometry Perm Buffer (PF00011-C).