

À des fins de recherche uniquement

Anticorps Monoclonal anti-SLC30A2

Numéro de catalogue: CL488-67993



Informations de base

Numéro de catalogue: CL488-67993	Numéro d'acquisition GenBank: BC006251	Méthode de purification: Purification par protéine G
Taille: 100ul, Concentration: 1000 µg/ml by Nanodrop;	Identification du gène (NCBI): 7780	CloneNo.: 1D9E5
Hôte: Mouse	Nom complet: solute carrier family 30 (zinc transporter), member 2	Excitation/Emission maxima wavelengths: 493 nm / 522 nm
Isotype: IgG1	MW calculé 323 aa, 35 kDa	
Immunogen Catalog Number: AG8232	MW observés: 41 kDa	

Applications

Applications testées:
FC (Intra)
Spécificité de l'espèce:
Humain, souris

Informations générales

SLC30A2, also named as the Zn transporter 2 gene (ZnT2), belongs to the cation diffusion facilitator (CDF) transporter (TC 2.A.4) family and SLC30A subfamily. It plays a role in the zinc ion transmembrane transport. Expression of SLC30A2 is restricted to secretory cells, such as acinar pancreatic cells, prostate epithelial cells, placental trophoblasts, Paneth cells, and mammary epithelial cells (MECs). SLC30A2 consists of six transmembrane domains with cytoplasmic N- and C-termini that contain numerous regulatory domains, and functions as a homo- or hetero- dimer to transport Zn into vesicles (PMID: 29476070). SLC30A2 has 2 isoforms with the molecular mass of 35 and 41 kDa.

Stockage

Stockage:
Stocker à -20 °C. Éviter toute exposition à la lumière. Stable pendant un an après l'expédition.
Tampon de stockage:
PBS avec glycérol à 50 %, Proclin300 à 0,05 % et BSA à 0,5 %, pH 7,3.
L'aliquotage n'est pas nécessaire pour le stockage à -20C

***** Les 20ul contiennent 0,1% de BSA.**

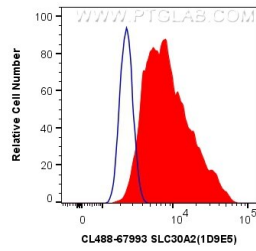
For technical support and original validation data for this product please contact:

T: 1 (888) 4PTGLAB (1-888-478-4522) (toll free
in USA), or 1(312) 455-8498 (outside USA)

E: proteintech@ptglab.com
W: ptglab.com

This product is exclusively available under Proteintech Group brand and is not available to purchase from any other manufacturer.

Données de validation sélectionnées



1X10⁶ HeLa cells were intracellularly stained with 0.4 ug Coralite® Plus 488 Anti-Human SLC30A2 (CL488-67993, Clone:1D9E5) (red), or 0.4 ug Control Antibody. Cells were fixed with 4% PFA and permeabilized with Flow Cytometry Perm Buffer (PF00011-C).