

À des fins de recherche uniquement

Anticorps Monoclonal anti-Sortilin

Numéro de catalogue: CL488-68007



Informations de base

Numéro de catalogue: CL488-68007	Numéro d'acquisition GenBank: BC023542	Méthode de purification: Purification par protéine A
Taille: 100ul, Concentration: 1000 µg/ml by Nanodrop;	Identification du gène (NCBI): 6272	CloneNo.: 2B11B9
Hôte: Mouse	Nom complet: sortilin 1	Dilutions recommandées: IF 1:50-1:500
Isotype: IgG2a	MW calculé: 831 aa, 92 kDa	Excitation/Emission maxima wavelengths: 493 nm / 522 nm
Immunogen Catalog Number: AG28043	MW observés: 100 kDa	

Applications

Applications testées: FC (Intra), IF	Contrôles positifs: IF : tissu cérébral de souris,
Spécificité de l'espèce: Humain, porc, rat, souris	

Informations générales

Sortilin 1 (SORT1), is a trans-Golgi network (TGN) transmembrane protein and is a member of the Vps10p domain receptor family. SORT1 binds a number of unrelated ligands that participate in a wide range of cellular processes. It functions as a sorting receptor in the Golgi compartment and as a clearance receptor on the cell surface.

Stockage

Stockage:
Stocker à -20 °C. Éviter toute exposition à la lumière. Stable pendant un an après l'expédition.
Tampon de stockage:
PBS avec glycérol à 50 %, Proclin300 à 0,05 % et BSA à 0,5 %, pH 7,3.
L'aliquotage n'est pas nécessaire pour le stockage à -20C

***** Les 20ul contiennent 0,1% de BSA.**

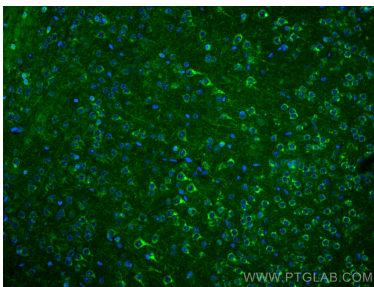
For technical support and original validation data for this product please contact:

T: 1 (888) 4PTGLAB (1-888-478-4522) (toll free
in USA), or 1(312) 455-8498 (outside USA)

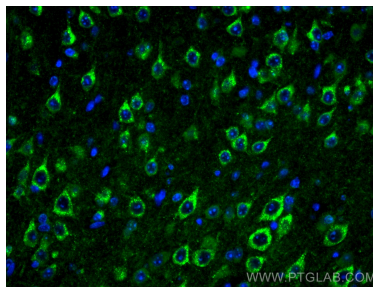
E: proteintech@ptglab.com
W: ptglab.com

This product is exclusively available under Proteintech Group brand and is not available to purchase from any other manufacturer.

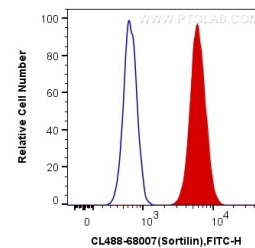
Données de validation sélectionnées



Immunofluorescent analysis of (4% PFA) fixed mouse brain tissue using Coralite® Plus 488 Sortilin antibody (CL488-68007, Clone: 2B11B9) at dilution of 1:200.



Immunofluorescent analysis of (4% PFA) fixed mouse brain tissue using Coralite® Plus 488 Sortilin antibody (CL488-68007, Clone: 2B11B9) at dilution of 1:200.



1X10⁶ SH-SY5Y cells were intracellularly stained with 0.4 ug Coralite® Plus 488 Anti-Human Sortilin (CL488-68007, Clone:2B11B9) (red), or 0.4 ug Control Antibody. Cells were fixed with 4% PFA and permeabilized with Flow Cytometry Perm Buffer (PF00011-C).