

À des fins de recherche uniquement

Anticorps Monoclonal anti-CRMP1

Numéro de catalogue: CL488-68021



Informations de base

Numéro de catalogue: CL488-68021	Numéro d'acquisition GenBank: BC000252	Méthode de purification: Purification par protéine A
Taille: 100ul , Concentration: 1000 µg/ml by Nanodrop;	Identification du gène (NCBI): 1400	CloneNo.: 2F4G5
Hôte: Mouse	Nom complet: collapsin response mediator protein 1	Excitation/Emission maxima wavelengths: 493 nm / 522 nm
Isotype: IgG2a	MW calculé 62 kDa	
Immunogen Catalog Number: AG30090	MW observés: 62 kDa	

Applications

Applications testées:
FC (Intra)

Spécificité de l'espèce:
Humain, Lapin, porc, poulet, rat, souris

Informations générales

CRMP1 (Collapsin response mediator protein 1) is also named as DPYSL1, ULIP3, DRP-1 and belongs to the collapsin response mediator protein family, which are a family of five cytoplasmic proteins predominantly expressed in the developing nervous system. CRMP1, the predicted 62 kDa protein and its 74 kDa isoform corresponding to its N-terminal splice variant already described for embryonic, neonatal, and adult brain of the rat are evidenced in the cortex of adult mouse (PMID:15834957). This protein is involved in invasion, and aggressiveness of prolactin pituitary tumors.

Stockage

Stockage:
Stocker à -20 °C. Éviter toute exposition à la lumière. Stable pendant un an après l'expédition.

Tampon de stockage:
PBS avec glycérol à 50 %, Proclin300 à 0,05 % et BSA à 0,5 %, pH 7,3.
L'aliquotage n'est pas nécessaire pour le stockage à -20C

*** Les 20ul contiennent 0,1% de BSA.

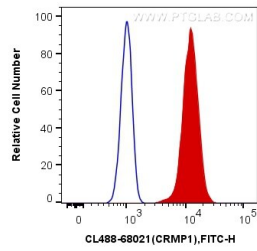
For technical support and original validation data for this product please contact:

T: 1 (888) 4PTGLAB (1-888-478-4522) (toll free
in USA), or 1(312) 455-8498 (outside USA)

E: proteintech@ptglab.com
W: ptglab.com

This product is exclusively available under Proteintech Group brand and is not available to purchase from any other manufacturer.

Données de validation sélectionnées



1X10⁶ U2OS cells were intracellularly stained with 0.4 ug CoraLite® Plus 488 Anti-Human CRMP1 (CL488-68021, Clone:2F4G5) (red), or 0.4 ug Control Antibody. Cells were fixed with 4% PFA and permeabilized with Flow Cytometry Perm Buffer (PF00011-C).