

À des fins de recherche uniquement

Anticorps Monoclonal anti-SLC39A3

Numéro de catalogue: CL488-68025



Informations de base

Numéro de catalogue: CL488-68025	Numéro d'acquisition GenBank: BC005869	Méthode de purification: Purification par protéine A
Taille: 100ul , Concentration: 1000 µg/ml by Nanodrop;	Identification du gène (NCBI): 29985	CloneNo.: 1A11F6
Hôte: Mouse	Nom complet: solute carrier family 39 (zinc transporter), member 3	Excitation/Emission maxima wavelengths: 493 nm / 522 nm
Isotype: IgG2a	MW calculé: 314 aa, 34 kDa	
Immunogen Catalog Number: AG14289	MW observés: 32 kDa	

Applications

Applications testées:
FC (Intra)

Spécificité de l'espèce:
Humain

Informations générales

SLC39A3, also named as ZIP3, belongs to the ZIP transporter (TC 2.A.5) family. SLC39A3 is a Zn importer that acts as a zinc-influx transporter. SLC39A3 is highly expressed in a cell-type-specific manner in ovaries, testes, and the developing nervous system with limited expression in the small intestinal crypt cells, kidney glomerulus, and discrete regions of the liver. SLC39A3 is also expressed in highly specialized, hormonally responsive secretory tissues, such as the pancreas, prostate, and mammary gland (PMID: 19458277). SLC39A3 has 2 isoforms with the molecular mass of 11 and 34 kDa.

Stockage

Stockage:
Stocker à -20 °C. Éviter toute exposition à la lumière. Stable pendant un an après l'expédition.

Tampon de stockage:
PBS avec glycérol à 50 %, Proclin300 à 0,05 % et BSA à 0,5 %, pH 7,3.
L'aliquotage n'est pas nécessaire pour le stockage à -20C

*** Les 20ul contiennent 0,1% de BSA.

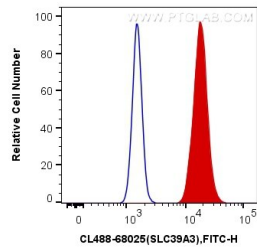
For technical support and original validation data for this product please contact:

T: 1 (888) 4PTGLAB (1-888-478-4522) (toll free in USA), or 1(312) 455-8498 (outside USA)

E: proteintech@ptglab.com
W: ptglab.com

This product is exclusively available under Proteintech Group brand and is not available to purchase from any other manufacturer.

Données de validation sélectionnées



1X10⁶ A431 cells were intracellularly stained with 0.4 ug CoraLite® Plus 488 Anti-Human SLC39A3 (CL488-68025, Clone:1A11F6) (red), or 0.4 ug Mouse IgG2a Isotype Control (CL488-66360-2, Clone: K11A1B2A2) (blue). Cells were fixed with 4% PFA and permeabilized with Flow Cytometry Perm Buffer (PF00011-C).