

À des fins de recherche uniquement

Anticorps Monoclonal anti-CR1

Numéro de catalogue: **CL488-68033**



Informations de base

Numéro de catalogue: CL488-68033	Numéro d'acquisition GenBank: NM_000573	Méthode de purification: Purification par protéine G
Taille: 100ul , Concentration: 1000 µg/ml by Nanodrop;	Identification du gène (NCBI): 1378	CloneNo.: 1B8E6
Hôte: Mouse	Nom complet: complement component (3b/4b) receptor 1 (Knops blood group)	Dilutions recommandées: IF 1:50-1:500
Isotype: IgG1	MW calculé 224 kDa	Excitation/Emission maxima wavelengths: 493 nm / 522 nm
Immunogen Catalog Number: AG30268		

Applications

Applications testées: IF	Contrôles positifs: IF : tissu d'appendicite humain,
Spécificité de l'espèce: Humain	

Informations générales

Complement receptor type 1 (CR1), also known as C3b/C4b receptor or CD35, is a single-chain glycoprotein consisting of 30 repeating homologous protein domains known as short consensus repeats (~60 amino acids each) followed by transmembrane and cytoplasmic domains (PMID: 8765013). CR1 is variably expressed by granulocytes, monocytes, B cells, some T cells, erythrocytes, follicular dendritic cells, Langerhan cells and glomerular podocytes (PMID: 19004497). CR1 acts as a receptor for C3b and C4b and plays important roles in regulation of the complement cascade and clearance of immune complexes. A soluble form of CR1 (sCR1) has been found in plasma (PMID: 3156931). It has been reported that sCR1 is produced by a proteolytic cleavage in the C-terminal region of CR1 transmembrane domain (PMID: 9405292).

Stockage

Stockage:
Stocker à -20 °C. Éviter toute exposition à la lumière. Stable pendant un an après l'expédition.
Tampon de stockage:
PBS avec glycérol à 50 %, Proclin300 à 0,05 % et BSA à 0,5 %, pH 7,3.
L'aliquotage n'est pas nécessaire pour le stockage à -20C

***** Les 20ul contiennent 0,1% de BSA.**

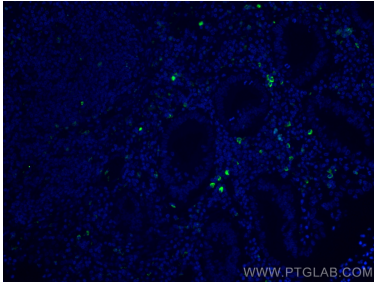
For technical support and original validation data for this product please contact:

T: 1 (888) 4PTGLAB (1-888-478-4522) (toll free
in USA), or 1(312) 455-8498 (outside USA)

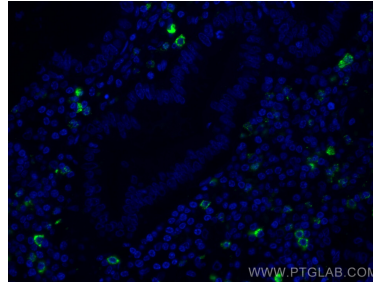
E: proteintech@ptglab.com
W: ptglab.com

This product is exclusively available under Proteintech Group brand and is not available to purchase from any other manufacturer.

Données de validation sélectionnées



Immunofluorescent analysis of (4% PFA) fixed human appendicitis tissue using CoraLite® Plus 488 CR1 antibody (CL488-68033, Clone: 1B8E6) at dilution of 1:200.



Immunofluorescent analysis of (4% PFA) fixed human appendicitis tissue using CoraLite® Plus 488 CR1 antibody (CL488-68033, Clone: 1B8E6) at dilution of 1:200.