

À des fins de recherche uniquement

Anticorps Monoclonal anti-PAIP1

Numéro de catalogue: CL488-68042



Informations de base

Numéro de catalogue: CL488-68042	Numéro d'acquisition GenBank: BC005295	Méthode de purification: Purification par protéine A
Taille: 100ul , Concentration: 1000 µg/ml by Nanodrop;	Identification du gène (NCBI): 10605	CloneNo.: 2H9D4
Hôte: Mouse	Nom complet: poly(A) binding protein interacting protein 1	Dilutions recommandées: IF 1:50-1:500
Isotype: IgG2b	MW calculé 70 kDa	Excitation/Emission maxima wavelengths: 493 nm / 522 nm
Immunogen Catalog Number: AG16773	MW observés: 40-45kDa, 62kDa	

Applications

Applications testées: FC (Intra), IF	Contrôles positifs: IF : cellules HeLa,
Spécificité de l'espèce: Humain, Lapin, souris	

Informations générales

PAIP1 is a PABP-binding protein that contains two distinct PABP-binding motifs (PAMs). PAM1 binds to RNA recognition motif 2 in the N terminus of PABP; PAM2, which is a conserved region comprising approximately 15 amino acids, binds to the PABC domain of PABP. PAIP1 acts as a coactivator in the regulation of translation initiation of poly(A)-containing mRNAs.

Stockage

Stockage:
Stocker à -20 °C. Éviter toute exposition à la lumière.
Tampon de stockage:
PBS avec glycérol à 50 %, Proclin300 à 0,05 % et BSA à 0,5 %, pH 7,3.
L'aliquotage n'est pas nécessaire pour le stockage à -20C

***** Les 20ul contiennent 0,1% de BSA.**

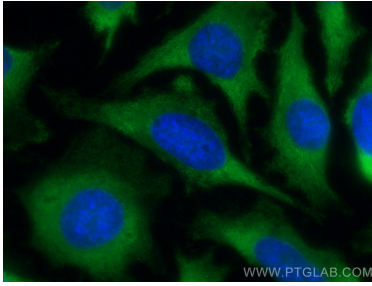
For technical support and original validation data for this product please contact:

T: 1 (888) 4PTGLAB (1-888-478-4522) (toll free
in USA), or 1(312) 455-8498 (outside USA)

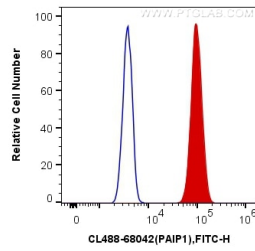
E: proteintech@ptglab.com
W: ptglab.com

This product is exclusively available under Proteintech Group brand and is not available to purchase from any other manufacturer.

Données de validation sélectionnées



Immunofluorescent analysis of (-20°C Methanol) fixed HeLa cells using CoraLite® Plus 488 PAIP1 antibody (CL488-68042, Clone: 2H9D4) at dilution of 1:200.



1X10⁶ HeLa cells were intracellularly stained with 0.4 ug CoraLite® Plus 488 Anti-Human PAIP1 (CL488-68042, Clone:2H9D4) (red), or 0.4 ug Mouse IgG2b Isotype Control (CL488-66360-3, Clone: K11B8C4B5) (blue). Cells were fixed with 4% PFA and permeabilized with Flow Cytometry Perm Buffer (PF00011-C).