

À des fins de recherche uniquement

Anticorps Monoclonal anti-HSPB11

Numéro de catalogue: CL488-68059



Informations de base

Numéro de catalogue: CL488-68059	Numéro d'acquisition GenBank: BC005245	Méthode de purification: Purification par protéine A
Taille: 100ul, Concentration: 1000 µg/ml by Nanodrop;	Identification du gène (NCBI): 51668	CloneNo.: 2D11B3
Hôte: Mouse	Nom complet: heat shock protein family B (small), member 11	Excitation/Emission maxima wavelengths: 493 nm / 522 nm
Isotype: IgG2a	MW calculé 144 aa, 16 kDa	
Immunogen Catalog Number: AG8804	MW observés: 20 kDa	

Applications

Applications testées:
FC (Intra)
Spécificité de l'espèce:
Humain

Informations générales

HSPB11 (Heat shock protein beta-11), also known as IFT25, was originally identified as a small heat shock protein. Recently it has been identified as a component of IFT complex B. It has been demonstrated that IFT25 is not required for ciliary assembly but is required for proper Hedgehog signaling, which in mammals occurs within cilia. Cilia lacking IFT25 have defects in the signal-dependent transport of multiple Hedgehog components and fail to activate the pathway upon stimulation.

Stockage

Stockage:
Stocker à -20 °C. Éviter toute exposition à la lumière. Stable pendant un an après l'expédition.
Tampon de stockage:
PBS avec glycérol à 50 %, Proclin300 à 0,05 % et BSA à 0,5 %, pH 7,3.
L'aliquotage n'est pas nécessaire pour le stockage à -20C

***** Les 20ul contiennent 0,1% de BSA.**

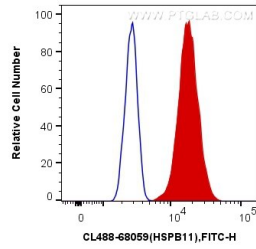
For technical support and original validation data for this product please contact:

T: 1 (888) 4PTGLAB (1-888-478-4522) (toll free
in USA), or 1(312) 455-8498 (outside USA)

E: proteintech@ptglab.com
W: ptglab.com

This product is exclusively available under Proteintech Group brand and is not available to purchase from any other manufacturer.

Données de validation sélectionnées



1X10⁶ HeLa cells were intracellularly stained with 0.4 ug Coralite® Plus 488 Anti-Human HSPB11 (CL488-68059, Clone:2D11B3) (red), or 0.4 ug Mouse IgG2a Isotype Control (CL488-66360-2, Clone: K11A1B2A2) (blue). Cells were fixed with 4% PFA and permeabilized with Flow Cytometry Perm Buffer (PF00011-C).