

À des fins de recherche uniquement

# Anticorps Monoclonal anti-PRAME

Numéro de catalogue: **CL488-68097** **Phare**



## Informations de base

<b>Numéro de catalogue:</b> CL488-68097	<b>Numéro d'acquisition GenBank:</b> BC014074	<b>Méthode de purification:</b> Purification par protéine A
<b>Taille:</b> 100ul, Concentration: 1000 µg/ml by Nanodrop;	<b>Identification du gène (NCBI):</b> 23532	<b>CloneNo.:</b> 1E9G9
<b>Hôte:</b> Mouse	<b>Nom complet:</b> preferentially expressed antigen in melanoma	<b>Dilutions recommandées:</b> IF 1:50-1:500
<b>Isotype:</b> IgG2b	<b>MW calculé</b> 509 aa, 58 kDa	<b>Excitation/Emission maxima wavelengths:</b> 493 nm / 522 nm
<b>Immunogen Catalog Number:</b> AG1906	<b>MW observés:</b> 50 kDa	

## Applications

<b>Applications testées:</b> IF	<b>Contrôles positifs:</b> IF : cellules HaCaT,
<b>Spécificité de l'espèce:</b> Humain, rat, souris	

## Informations générales

The PRAME (preferentially expressed antigen of melanoma) gene was previously shown to be overexpressed in ovarian/primary peritoneal serous carcinoma compared with malignant mesothelioma using gene expression arrays. It is considered a melanocyte differentiation antigen which is overexpressed in both solid and hematologic tumors. In normal tissue, a very low level of PRAME expression is found in normal testis, adrenals, ovary and endometrium. A high level of PRAME expression has been reported for several solid tumors, including ovarian cancer, breast cancer, lung cancer and melanomas, medulloblastoma, sarcomas, head and neck cancers, neuroblastoma, renal cancer, and Wilms'tumor. As a nuclear transcriptional repressor protein, PRAME binds to retinoic acid receptor  $\alpha$ , thereby inhibiting retinoic acid induced differentiation, growth arrest, and apoptosis.

## Stockage

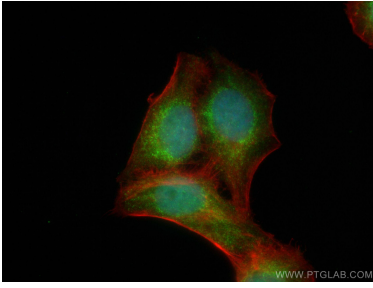
**Stockage:**  
Stocker à -20 °C. Éviter toute exposition à la lumière. Stable pendant un an après l'expédition.  
**Tampon de stockage:**  
PBS avec glycérol à 50 %, Proclin300 à 0,05 % et BSA à 0,5 %, pH 7,3.  
L'aliquotage n'est pas nécessaire pour le stockage à -20C

**\*\*\* Les 20ul contiennent 0,1% de BSA.**

For technical support and original validation data for this product please contact:  
T: 1 (888) 4PTGLAB (1-888-478-4522) (toll free in USA), or 1(312) 455-8498 (outside USA)  
E: [proteintech@ptglab.com](mailto:proteintech@ptglab.com)  
W: [ptglab.com](http://ptglab.com)

This product is exclusively available under Proteintech Group brand and is not available to purchase from any other manufacturer.

## Données de validation sélectionnées



Immunofluorescent analysis of (4% PFA) fixed HaCaT cells using CoraLite® Plus 488 PRAME antibody (CL488-68097, Clone: 1E9G9) at dilution of 1:100, CL594-phalloidin (red).