

À des fins de recherche uniquement

Anticorps Monoclonal anti-CEP89, CCDC123



Numéro de catalogue: **CL488-68112**

Informations de base

Numéro de catalogue: CL488-68112	Numéro d'acquisition GenBank: BC136328	Méthode de purification: Purification par protéine G
Taille: 100ul , Concentration: 1000 µg/ml by Nanodrop;	Identification du gène (NCBI): 84902	CloneNo.: 1F12C5
Hôte: Mouse	Nom complet: coiled-coil domain containing 123	Dilutions recommandées: IF 1:50-1:500
Isotype: IgG1	MW calculé 783 aa, 90 kDa	Excitation/Emission maxima wavelengths: 493 nm / 522 nm
Immunogen Catalog Number: AG28339	MW observés: 90 kDa	

Applications

Applications testées: IF	Contrôles positifs: IF : cellules HeLa,
Spécificité de l'espèce: Humain, souris	

Informations générales

CCDC123 (as known as CEP123), also named as CEP89, encodes for a protein required for ciliogenesis. It plays a role in mitochondrial metabolism by modulating complex IV activity. It has been shown that CEP123 is localized to the distal appendages of the mother centriole and the localization of CEP123 is cell cycle-dependent with its levels decreasing during mitosis. CEP123 depletion can cause defects in ciliary vesicle formation and prevent the formation of a ciliary vesicle at the distal end of the mother centriole. It is possible that CEP123 is involved in regulating the recruitment of membranes to the centrosome through its interaction with CEP290 (PMID:23575228, 23789104, 23348840).

Stockage

Stockage:
Stocker à -20 °C. Éviter toute exposition à la lumière. Stable pendant un an après l'expédition.
Tampon de stockage:
PBS avec glycérol à 50 %, Proclin300 à 0,05 % et BSA à 0,5 %, pH 7,3.
L'aliquotage n'est pas nécessaire pour le stockage à -20C

***** Les 20ul contiennent 0,1% de BSA.**

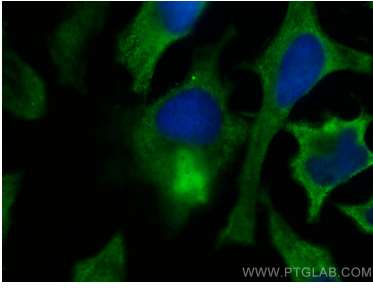
For technical support and original validation data for this product please contact:

T: 1 (888) 4PTGLAB (1-888-478-4522) (toll free
in USA), or 1(312) 455-8498 (outside USA)

E: proteintech@ptglab.com
W: ptglab.com

This product is exclusively available under Proteintech Group brand and is not available to purchase from any other manufacturer.

Données de validation sélectionnées



Immunofluorescent analysis of (-20°C Methanol) fixed HeLa cells using Coralite® Plus 488 CEP89, CCDC123 antibody (CL488-68112, Clone: 1F12C5) at dilution of 1:200.