

À des fins de recherche uniquement

Anticorps Monoclonal anti-Dystrophin



Numéro de catalogue: **CL488-68120**

Informations de base

Numéro de catalogue: CL488-68120	Numéro d'acquisition GenBank: BC028720	Méthode de purification: Purification par protéine A
Taille: 100ul , Concentration: 1000 µg/ml by Nanodrop;	Identification du gène (NCBI): 1756	CloneNo.: 1G12E6
Hôte: Mouse	Nom complet: dystrophin	Dilutions recommandées: IF 1:50-1:500
Isotype: IgG2a	MW calculé 3685 aa, 427 kDa	Excitation/Emission maxima wavelengths: 493 nm / 522 nm
Immunogen Catalog Number: AG4392	MW observés: 70 kDa, 430 kDa	

Applications

Applications testées: FC (Intra), IF	Contrôles positifs: IF : cellules H9C2,
Spécificité de l'espèce: Humain, rat, souris	

Informations générales

Dystrophin (DMD or BMD) is a large muscle protein whose mutations cause Duchenne muscular dystrophy (DMD) and Becker muscular dystrophy (BMD), the childhood neuromuscular disorders that result in progressive muscle weakness, respiratory difficulties and cardiovascular dysfunction. Dystrophin is a crucial component of the dystrophin-glycoprotein complex which is essential for muscle membrane integrity and stability. Dystrophin is located on the cytoplasmic face of the sarcolemma and connects the cytoskeletal network to the sarcolemma and extracellular matrix. Multiple isoforms of dystrophin exist due to the alternative splicing, with a wide range of MW (69-72, 110-143, 271, 426 kDa). Most tissues contain transcripts of several isoforms.

Stockage

Stockage:
Stocker à -20 °C. Éviter toute exposition à la lumière. Stable pendant un an après l'expédition.
Tampon de stockage:
PBS avec glycérol à 50 %, Proclin300 à 0,05 % et BSA à 0,5 %, pH 7,3.
L'aliquotage n'est pas nécessaire pour le stockage à -20C

***** Les 20ul contiennent 0,1% de BSA.**

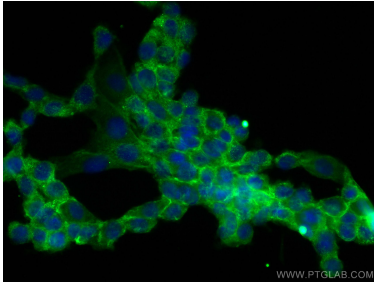
For technical support and original validation data for this product please contact:

T: 1 (888) 4PTGLAB (1-888-478-4522) (toll free
in USA), or 1(312) 455-8498 (outside USA)

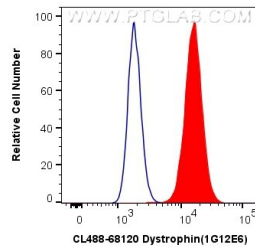
E: proteintech@ptglab.com
W: ptglab.com

This product is exclusively available under Proteintech Group brand and is not available to purchase from any other manufacturer.

Données de validation sélectionnées



Immunofluorescent analysis of (-20°C Methanol) fixed H9C2 cells using CoraLite® Plus 488 Dystrophin antibody (CL488-68120, Clone: 1G12E6) at dilution of 1:200.



1X10⁶ HepG2 cells were intracellularly stained with 0.8 ug CoraLite® Plus 488 Anti-Human Dystrophin (CL488-68120, Clone:1G12E6) (red), or 0.8 ug CoraLite® Plus 488 Mouse IgG2a Isotype Control (C1.18.4) (CL488-65208, Clone: C1.18.4) (blue). Cells were fixed with 4% PFA and permeabilized with Flow Cytometry Perm Buffer (PF00011-C).