

À des fins de recherche uniquement

Anticorps Monoclonal anti-RBP5

Numéro de catalogue: CL488-68126



Informations de base

Numéro de catalogue: CL488-68126	Numéro d'acquisition GenBank: BC029355	Méthode de purification: Purification par protéine G
Taille: 100ul, Concentration: 1000 µg/ml by Nanodrop;	Identification du gène (NCBI): 83758	CloneNo.: 1G7E2
Hôte: Mouse	Nom complet: retinol binding protein 5, cellular	Dilutions recommandées: IF 1:50-1:500
Isotype: IgG1	MW calculé: 135 aa, 16 kDa	Excitation/Emission maxima wavelengths: 493 nm / 522 nm
Immunogen Catalog Number: AG24562	MW observés: 16-18 kDa	

Applications

Applications testées: IF	Contrôles positifs: IF : cellules HepG2, cellules A431
Spécificité de l'espèce: Humain, porc	

Informations générales

RBP5 (CRBP III) belongs to the fatty-acid binding protein (FABP) family. Human liver and kidney contain the highest levels of CRBP III mRNA, and CRBP III is as a major human intracellular carrier of retinol (PMID:11274389). RBP5 iron response are reversible by genetic complementation. And increased RBP5 expression occurs by a post-transcriptional feedback mechanism whereby RBP5 interacts with its own, and with PAP2 mRNAs. RBP5 is the most significant of the proteins upregulated by iron starvation (PMID:34161395). RBP5 has an estimated molecular mass (15.9 kDa) typical of this protein superfamily (PMID:11274389).

Stockage

Stockage:
Stocker à -20 °C. Éviter toute exposition à la lumière. Stable pendant un an après l'expédition.
Tampon de stockage:
PBS avec glycérol à 50 %, Proclin300 à 0,05 % et BSA à 0,5 %, pH 7,3.
L'aliquotage n'est pas nécessaire pour le stockage à -20C

***** Les 20ul contiennent 0,1% de BSA.**

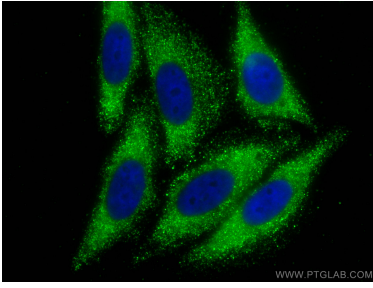
For technical support and original validation data for this product please contact:

T: 1 (888) 4PTGLAB (1-888-478-4522) (toll free
in USA), or 1(312) 455-8498 (outside USA)

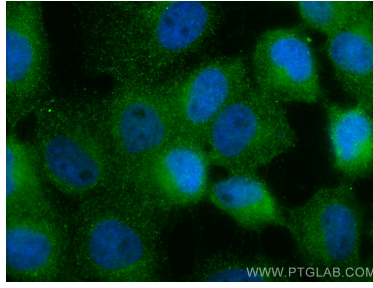
E: proteintech@ptglab.com
W: ptglab.com

This product is exclusively available under Proteintech Group brand and is not available to purchase from any other manufacturer.

Données de validation sélectionnées



Immunofluorescent analysis of (-20°C Ethanol) fixed HepG2 cells using CoraLite® Plus 488 RBP5 antibody (CL488-68126, Clone: 1G7E2) at dilution of 1:200.



Immunofluorescent analysis of (4% PFA) fixed A431 cells using CoraLite® Plus 488 RBP5 antibody (CL488-68126, Clone: 1G7E2) at dilution of 1:200.