

À des fins de recherche uniquement

Anticorps Recombinant de lapin anti-smooth muscle actin specific



Numéro de catalogue: **CL488-80008**

Informations de base

Numéro de catalogue: CL488-80008	Numéro d'acquisition GenBank: NM_001613	Méthode de purification: Purification par protéine A
Taille: 100ul, Concentration: 1000 µg/ml by 59 Nanodrop;	Identification du gène (NCBI): 59	CloneNo.: 5H7
Hôte: Lapin	Nom complet: actin, alpha 2, smooth muscle, aorta	Dilutions recommandées: IF 1:50-1:500
Isotype: IgG	MW calculé: 42 kDa	Excitation/Emission maxima wavelengths: 493 nm / 522 nm
	MW observés: 42 kDa	

Applications

Applications testées:
FC (Intra), IF
Spécificité de l'espèce:
Humain, porc, poulet, rat, souris

Contrôles positifs:
IF : tissu cardiaque de souris,

Informations générales

ACTA2 (also known as α -smooth muscle actin or α -SMA) belongs to the actin family. Actins are highly conserved proteins that are involved in various types of cell motility and are ubiquitously expressed in all eukaryotic cells. ACTA2 is primarily expressed in vascular smooth muscle and anti-ACTA2 is commonly used to marker smooth muscle cells.

Stockage

Stockage:
Stocker à -20 °C. Éviter toute exposition à la lumière. Stable pendant un an après l'expédition.
Tampon de stockage:
PBS avec glycérol à 50 %, Proclin300 à 0,05 % et BSA à 0,5 %, pH 7,3.
L'aliquotage n'est pas nécessaire pour le stockage à -20C

***** Les 20ul contiennent 0,1% de BSA.**

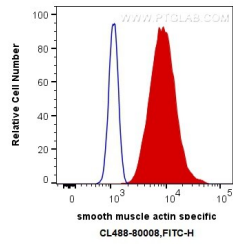
For technical support and original validation data for this product please contact:

T: 1 (888) 4PTGLAB (1-888-478-4522) (toll free
in USA), or 1(312) 455-8498 (outside USA)

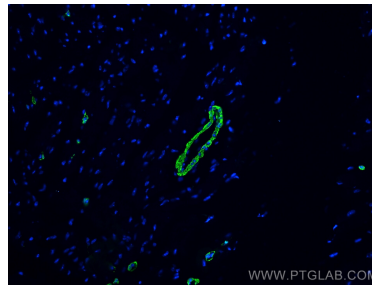
E: proteintech@ptglab.com
W: ptglab.com

This product is exclusively available under Proteintech Group brand and is not available to purchase from any other manufacturer.

Données de validation sélectionnées



1X10⁶ C2C12 cells were intracellularly stained with 0.4 ug CoraLite® Plus 488 Anti-Human smooth muscle actin specific (CL488-80008, Clone:5H7) (red), or 0.4 ug Control Antibody. Cells were fixed with 4% PFA and permeabilized with Flow Cytometry Perm Buffer (PF00011-C).



Immunofluorescent analysis of (4% PFA) fixed mouse heart tissue using CoraLite® Plus 488 smooth muscle actin specific antibody (CL488-80008, Clone: 5H7) at dilution of 1:200.



Immunofluorescent analysis of (4% PFA) fixed mouse heart tissue using CoraLite® Plus 488 smooth muscle actin specific antibody (CL488-80008, Clone: 5H7) at dilution of 1:200.