

À des fins de recherche uniquement

Anticorps Recombinant de lapin anti-Phospho-STAT5A (Tyr694)



Numéro de catalogue: CL488-80115

Informations de base

Numéro de catalogue: CL488-80115	Numéro d'acquisition GenBank: BC027036	Méthode de purification: Purification par protéine A
Taille: 100ul , Concentration: 1000 µg/ml by Nanodrop;	Identification du gène (NCBI): 6776	CloneNo.: 2P21
Hôte: Lapin	Nom complet: signal transducer and activator of transcription 5A	Excitation/Emission maxima wavelengths: 493 nm / 522 nm
Isotype: IgG	MW calculé: 794 aa, 92 kDa	
	MW observés: 90-95 kDa	

Applications

Applications testées:
FC (Intra)

Spécificité de l'espèce:
Humain

Informations générales

STAT5A, also named as STAT5, belongs to the transcription factor STAT family. In response to cytokines and growth factors, STAT family members are phosphorylated by the receptor associated kinases, and then form homo- or heterodimers that translocate to the cell nucleus where they act as transcription activators. STAT5A is activated by, and mediates the responses of many cell ligands, such as IL2, IL3, IL7 GM-CSF, erythropoietin, thrombopoietin, and different GHs. Phosphorylation at Tyr694 is obligatory for Stat5 activation. Activation of STAT5A in myeloma and lymphoma associated with a TEL/JAK2 gene fusion is independent of cell stimulus and has been shown to be essential for the tumorigenesis. The mouse counterpart of human STAT5A is found to induce the expression of BCL2L1/BCL-X(L), which suggests the antiapoptotic function of STAT5A in cells.

Stockage

Stockage:
Stocker à -20 °C. Éviter toute exposition à la lumière.

Tampon de stockage:
PBS avec glycérol à 50 %, Proclin300 à 0,05 % et BSA à 0,5 %, pH 7,3.

L'aliquotage n'est pas nécessaire pour le stockage à -20C

*** Les 20ul contiennent 0,1% de BSA.

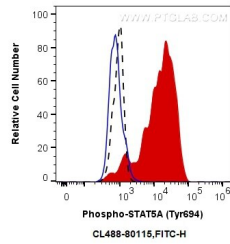
For technical support and original validation data for this product please contact:

T: 1 (888) 4PTGLAB (1-888-478-4522) (toll free
in USA), or 1(312) 455-8498 (outside USA)

E: proteintech@ptglab.com
W: ptglab.com

This product is exclusively available under Proteintech Group brand and is not available to purchase from any other manufacturer.

Données de validation sélectionnées



1X10⁶ TF-1 cells untreated (dashed lines) or treated with GM-CSF (red) were intracellularly stained with 0.06 ug CoraLite® Plus 488 Anti-Human Phospho-STAT5A (Tyr694) (CL488-80115, Clone:2P21), or 0.06 ug Control Antibody (blue). Cells were fixed with 4% PFA and permeabilized with 90% MeOH.