

À des fins de recherche uniquement

Anticorps Recombinant de lapin anti-Beta Catenin



Numéro de catalogue: **CL488-80488**

Informations de base

Numéro de catalogue: CL488-80488	Numéro d'acquisition GenBank: BC058926	Méthode de purification: Purification par protéine A
Taille: 100ul , Concentration: 1000 µg/ml by Nanodrop;	Identification du gène (NCBI): 1499	CloneNo.: 2J24
Hôte: Lapin	Nom complet: catenin (cadherin-associated protein), beta 1, 88kDa	Dilutions recommandées: IF 1:50-1:500
Isotype: IgG	MW calculé 781 aa, 86 kDa	Excitation/Emission maxima wavelengths: 493 nm / 522 nm
	MW observés: 92 kDa	

Applications

Applications testées: IF	Contrôles positifs: IF : cellules MCF-7,
Spécificité de l'espèce: Humain, poisson-zèbre, porc, rat, souris	

Informations générales

β -Catenin, also known as CTNNB1, is an evolutionarily conserved, multifunctional intracellular protein. β -Catenin is a 92-kDa protein, originally identified in cell adherens junctions (AJs) where it functions to bridge the cytoplasmic domain of cadherins to α -catenin and the actin cytoskeleton. Besides its essential role in the AJs, β -catenin is also a key downstream component of the canonical Wnt pathway that plays diverse and critical roles in embryonic development and adult tissue homeostasis. The Wnt/ β -catenin pathway is also involved in the activation of other intracellular messengers such as calcium fluxes, JNK, and SRC kinases. Deregulation of β -catenin activity is associated with multiple diseases including cancers. (PMID: 22617422; 18334222)

Stockage

Stockage:
Stocker à -20 °C. Éviter toute exposition à la lumière. Stable pendant un an après l'expédition.
Tampon de stockage:
PBS avec glycérol à 50 %, Proclin300 à 0,05 % et BSA à 0,5 %, pH 7,3.
L'aliquotage n'est pas nécessaire pour le stockage à -20C

***** Les 20ul contiennent 0,1% de BSA.**

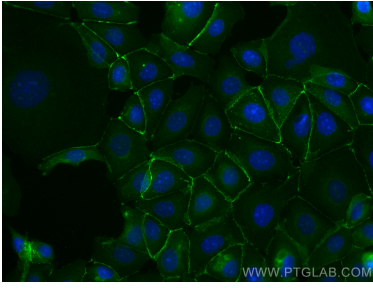
For technical support and original validation data for this product please contact:

T: 1 (888) 4PTGLAB (1-888-478-4522) (toll free
in USA), or 1(312) 455-8498 (outside USA)

E: proteintech@ptglab.com
W: ptglab.com

This product is exclusively available under Proteintech Group brand and is not available to purchase from any other manufacturer.

Données de validation sélectionnées



Immunofluorescent analysis of (-20°C Methanol) fixed MCF-7 cells using CoraLite® Plus 488 Beta Catenin antibody (CL488-80488, Clone: 2124) at dilution of 1:200.