

À des fins de recherche uniquement

# Anticorps Recombinant de lapin anti-IBA1



Numéro de catalogue: **CL488-81728**

## Informations de base

Numéro de catalogue: CL488-81728	Numéro d'acquisition GenBank: BC009474	Méthode de purification: Purification par protéine A
Taille: 100ul , Concentration: 1000 µg/ml by Nanodrop;	Identification du gène (NCBI): 199	CloneNo.: 4D5
Hôte: Lapin	Nom complet: allograft inflammatory factor 1	Dilutions recommandées: IF 1:50-1:500
Isotype: IgG	MW calculé 17 kDa	Excitation/Emission maxima wavelengths: 493 nm / 522 nm
Immunogen Catalog Number: AG1363	MW observés: 17 kDa	

## Applications

Applications testées: FC (Intra), IF	Contrôles positifs: IF : tissu cérébral de rat,
Spécificité de l'espèce: Humain, rat, souris	

## Informations générales

IBA1 is a 143 amino acid cytoplasmic, inflammation response scaffold protein. It is constitutively expressed in monocytes and macrophages and is known to be involved in macrophage activation. It is a marker of activated macrophage. Expression of IBA1 is up-regulated in activated microglia following facial nerve axotomy, ischemia, and several brain diseases, thereby implicating it in the activated phenotypes of microglia.

## Stockage

**Stockage:**  
Stocker à -20 °C. Éviter toute exposition à la lumière. Stable pendant un an après l'expédition.  
**Tampon de stockage:**  
PBS avec glycérol à 50 %, Proclin300 à 0,05 % et BSA à 0,5 %, pH 7,3.  
L'aliquotage n'est pas nécessaire pour le stockage à -20C

**\*\*\* Les 20ul contiennent 0,1% de BSA.**

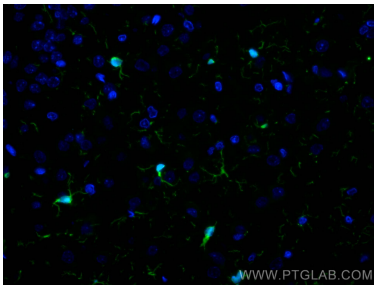
For technical support and original validation data for this product please contact:

T: 1 (888) 4PTGLAB (1-888-478-4522) (toll free  
in USA), or 1(312) 455-8498 (outside USA)

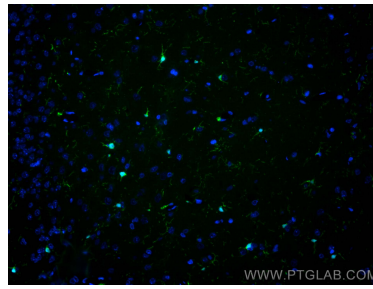
E: [proteintech@ptglab.com](mailto:proteintech@ptglab.com)  
W: [ptglab.com](http://ptglab.com)

**This product is exclusively available under Proteintech Group brand and is not available to purchase from any other manufacturer.**

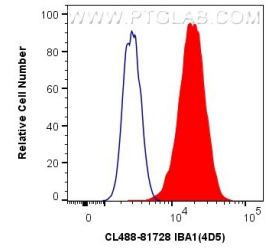
## Données de validation sélectionnées



Immunofluorescent analysis of (4% PFA) fixed rat brain tissue using CoraLite® Plus 488 IBA1 antibody (CL488-81728, Clone: 4D5) at dilution of 1:200.



Immunofluorescent analysis of (4% PFA) fixed rat brain tissue using CoraLite® Plus 488 IBA1 antibody (CL488-81728, Clone: 4D5) at dilution of 1:200.



1X10<sup>6</sup> THP-1 cells were intracellularly stained with 0.8 ug CoraLite® Plus 488 Anti-Human IBA1 (CL488-81728, Clone:4D5) (red), or 0.8 ug Isotype Control. Cells were fixed with 4% PFA and permeabilized with Flow Cytometry Perm Buffer (PF00011-C).