

À des fins de recherche uniquement

Anticorps Polyclonal de lapin anti-Cytokeratin 6A



Numéro de catalogue: CL555-10590

Informations de base

Numéro de catalogue: CL555-10590	Numéro d'acquisition GenBank: BC008807	Méthode de purification: Purification par affinité contre l'antigène
Taille: 100ul, Concentration: 1000 µg/ml by Nanodrop;	Identification du gène (NCBI): 3853	Dilutions recommandées: IF 1:50-1:500
Hôte: Lapin	Nom complet: keratin 6A	Excitation/Emission maxima wavelengths: 557 nm / 570nm
Isotype: IgG	MW calculé: 60 kDa	
Immunogen Catalog Number: AG0882	MW observés: 56 kDa	

Applications

Applications testées: IF	Contrôles positifs: IF : cellules A431,
Spécificité de l'espèce: Humain, rat, souris	

Informations générales

Keratins are a large family of proteins that form the intermediate filament cytoskeleton of epithelial cells, which are classified into two major sequence types. Type I keratins are a group of acidic intermediate filament proteins, including K9-K23, and the hair keratins Ha1-Ha8. Type II keratins are the basic or neutral counterparts to the acidic type I keratins, including K1-K8, and the hair keratins, Hb1-Hb6. Keratin 6 is a type II keratin. It is used as marker for epidermal hyperproliferation and differentiation. There are three keratin 6 isoforms: keratin 6A, 6B and 6C. They share more than 99% identical DNA sequence.

Stockage

Stockage:
Stocker à -20 °C. Éviter toute exposition à la lumière.
Tampon de stockage:
PBS avec glycérol à 50 %, Proclin300 à 0,05 % et BSA à 0,5 %, pH 7,3.
L'aliquotage n'est pas nécessaire pour le stockage à -20C

***** Les 20ul contiennent 0,1% de BSA.**

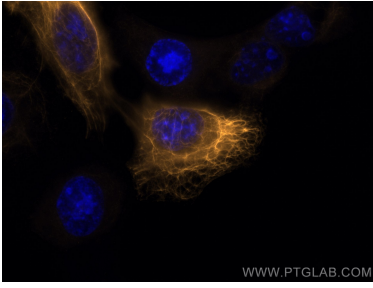
For technical support and original validation data for this product please contact:

T: 1 (888) 4PTGLAB (1-888-478-4522) (toll free in USA), or 1(312) 455-8498 (outside USA)

E: proteintech@ptglab.com
W: ptglab.com

This product is exclusively available under Proteintech Group brand and is not available to purchase from any other manufacturer.

Données de validation sélectionnées



Immunofluorescent analysis of (-20°C Methanol) fixed A431 cells using CoraLite®555 Cytokeratin 6A antibody (CL555-10590) at dilution of 1:200.