

À des fins de recherche uniquement

# Anticorps Polyclonal de lapin anti-EIF2S1/EIF2A



Numéro de catalogue: CL555-11170

## Informations de base

Numéro de catalogue: CL555-11170	Numéro d'acquisition GenBank: BC002513	Méthode de purification: Purification par affinité contre l'antigène
Taille: 100ul , Concentration: 1 mg/ml by Nanodrop;	Identification du gène (NCBI): 1965	Excitation/Emission maxima wavelengths: 554 nm / 570 nm
Hôte: Lapin	Nom complet: eukaryotic translation initiation factor 2, subunit 1 alpha, 35kDa	
Isotype: IgG	MW calculé 36 kDa	
Immunogen Catalog Number: AG1645	MW observés: 36 kDa	

## Applications

Applications testées:  
FC (Intra)

Spécificité de l'espèce:  
Humain, rat, souris

## Informations générales

EIF2S1 is one subunit of the translation initiation factor EIF2, which catalyzes the first regulated step of protein synthesis initiation, promoting the binding of the initiator tRNA to 40S ribosomal subunits. This complex binds to a 40S ribosomal subunit, followed by mRNA binding to form a 43S preinitiation complex. Junction of the 60S ribosomal subunit to form the 80S initiation complex is preceded by hydrolysis of the GTP bound to eIF-2 and release of an eIF-2-GDP binary complex. In order for eIF-2 to recycle and catalyze another round of initiation, the GDP bound to eIF-2 must exchange with GTP by way of a reaction catalyzed by eIF-2B. EIF2A (Gene ID: 83939) and EIF2S1 (Gene ID: 1965) share the EIF2A symbol/alias in common. EIF2S1 is the alpha subunit of the eIF2 translation initiation complex. Although both of these proteins function in binding initiator tRNA to the 40S ribosomal subunit, the EIF2A protein does so in a codon-dependent manner, whereas eIF2 complex requires GTP.

## Stockage

Stockage:  
Stocker à -20 °C. Éviter toute exposition à la lumière. Stable pendant un an après l'expédition.

Tampon de stockage:  
PBS avec glycérol à 50 %, Proclin300 à 0,05 % et BSA à 0,5 %, pH 7,3.  
L'aliquotage n'est pas nécessaire pour le stockage à -20C

\*\*\* Les 20ul contiennent 0,1% de BSA.

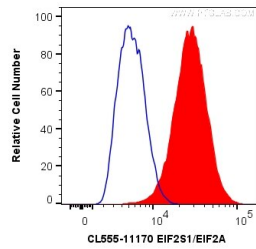
For technical support and original validation data for this product please contact:

T: 1 (888) 4PTGLAB (1-888-478-4522) (toll free in USA), or 1(312) 455-8498 (outside USA)

E: [proteintech@ptglab.com](mailto:proteintech@ptglab.com)  
W: [ptglab.com](http://ptglab.com)

This product is exclusively available under Proteintech Group brand and is not available to purchase from any other manufacturer.

## Données de validation sélectionnées



1X10<sup>6</sup> MCF-7 cells were intracellularly stained with 0.2 ug CoraLite® Plus 555 Anti-Human EIF2S1/EIF2A (CL555-11170) (red), or 0.2 ug CoraLite® Plus 555 Rabbit IgG Control Antibody(CL555-30000)(Blue). Cells were fixed with 4% PFA and permeabilized with Flow Cytometry Perm Buffer (PF00011-C).