

À des fins de recherche uniquement

Anticorps Polyclonal de lapin anti-ERK1/2



Numéro de catalogue: **CL555-11257** **Phare**

Informations de base

Numéro de catalogue: CL555-11257	Numéro d'acquisition GenBank: BC013992	Méthode de purification: Purification par affinité contre l'antigène
Taille: 100ul , Concentration: 1000 µg/ml by Nanodrop;	Identification du gène (NCBI): 5595	Excitation/Emission maxima wavelengths: 554 nm / 570 nm
Hôte: Lapin	Nom complet: mitogen-activated protein kinase 3	
Isotype: IgG	MW calculé 43 kDa	
Immunogen Catalog Number: AG1759	MW observés: 38-44 kDa	

Applications

Applications testées:
FC (Intra)

Spécificité de l'espèce:
Humain, rat, souris

Informations générales

ERK1 and ERK2 belong to the protein kinase superfamily. It is involved in both the initiation and regulation of meiosis, mitosis, and postmitotic functions in differentiated cells by phosphorylating a number of transcription factors such as ELK-1. ERK1/2 catalyzed the reaction: ATP + a protein = ADP + a phosphoprotein. It is activated by tyrosine phosphorylation in response to INS and NGF. This antibody can recognize both ERK1 and ERK2 with the molecular mass of 38-44 kDa.

Stockage

Stockage:
Stocker à -20 °C. Éviter toute exposition à la lumière. Stable pendant un an après l'expédition.

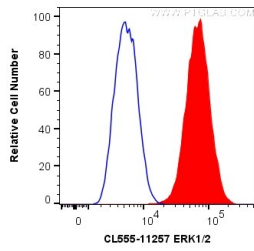
Tampon de stockage:
PBS avec glycérol à 50 %, Proclin300 à 0,05 % et BSA à 0,5 %, pH 7,3.
L'aliquotage n'est pas nécessaire pour le stockage à -20C

***** Les 20ul contiennent 0,1% de BSA.**

For technical support and original validation data for this product please contact:
T: 1 (888) 4PTGLAB (1-888-478-4522) (toll free in USA), or 1(312) 455-8498 (outside USA) E: proteintech@ptglab.com W: ptglab.com

This product is exclusively available under Proteintech Group brand and is not available to purchase from any other manufacturer.

Données de validation sélectionnées



1X10⁶ MCF-7 cells were intracellularly stained with 0.2 ug CoraLite® Plus 555 Anti-Human ERK1/2 (CL555-11257) (red), or 0.2 ug CoraLite® Plus 555 Rabbit IgG Control Antibody (CL555-30000)(Blue). Cells were fixed with 4% PFA and permeabilized with Flow Cytometry Perm Buffer (PF00011-C).